

FUJITSU Cloud Service S5

Connecting to a Virtual Machine (VM)

This guide describes the process for connecting to virtual machines in the FUJITSU Cloud Service S5

How to Set Up a VPN Connection

The following procedure explains how to log-in to a VM by using an SSL-VPN connection.

1. Select the "System Manager" from the Startup menu. After "System Manager" is opened, select the required Virtual System and click the "Details" button.

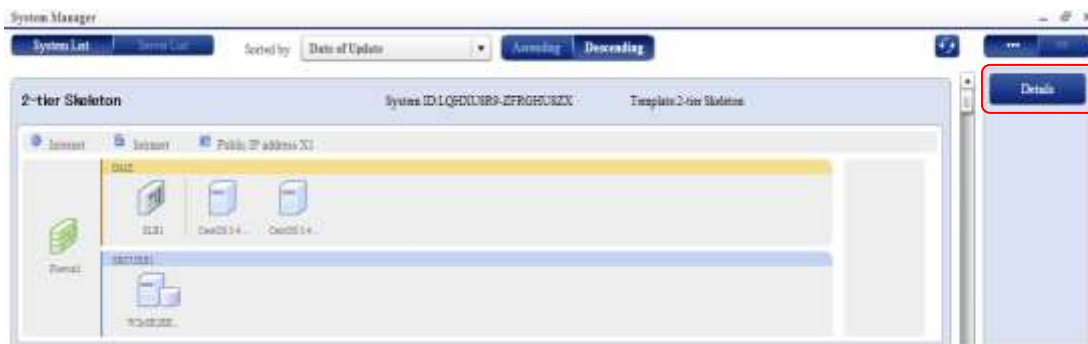


Figure 1 Connect to a VM

The "System Details" window is then displayed.

2. Select the required VM and click the "VPN Connection" button.

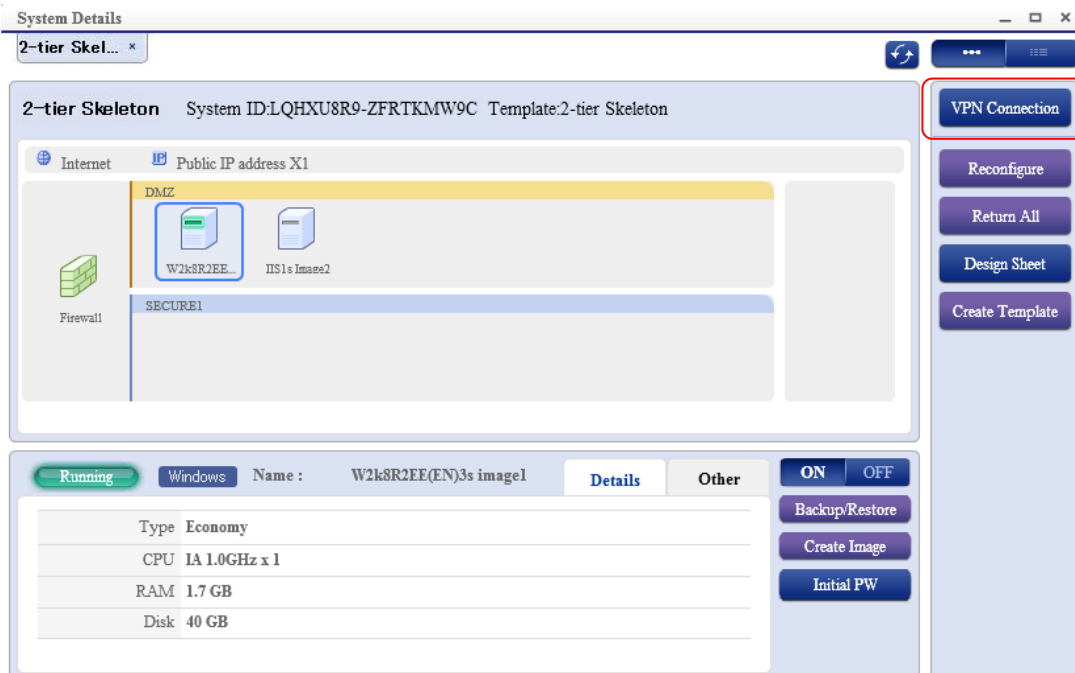


Figure 2 Connect to a VM

3. Select the Network Segment containing the VM and click the "Connect" button.

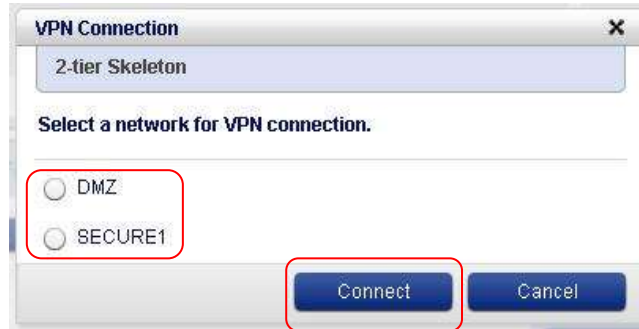


Figure Error! No text of specified style in document. Connect to a VM

4. Enter a User Name and Password at the SSL-VPN Login screen.



Figure 4 Connect to a VM

Note: The User Name and Password are the same as those for Service Portal Login.

5. Confirm the Active-X add-on (This only occurs for the first connection only)

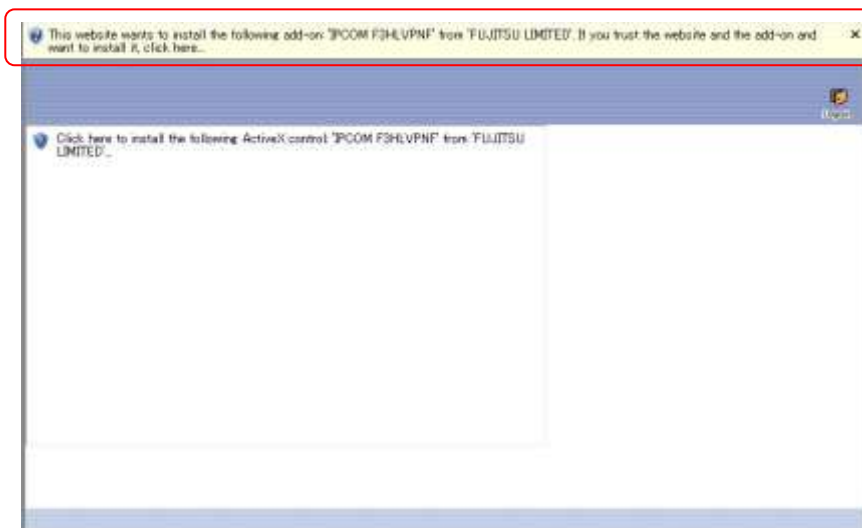


Figure 5 Connect to a VM

- When the screen confirming an execution of the Active-X add-on is displayed, install it from the message area.

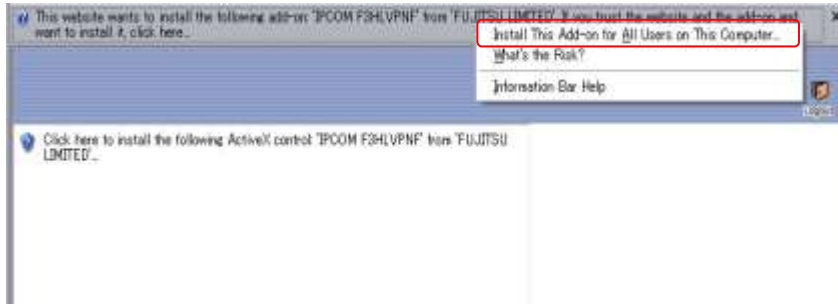


Figure 6 Connect to a VM

- Install the Active-X control

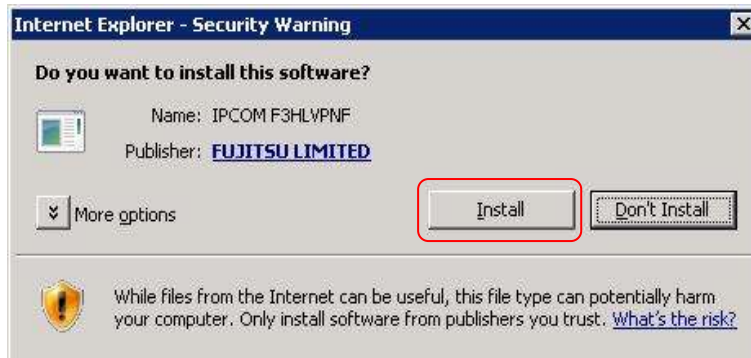


Figure 7 Connect to a VM

- Agree to the Access Point Server by clicking the "Agree" button



Figure 8 Connect to a VM

When above screen is displayed, the connection is establishing properly.



Figure 9 Connect to a VM

When connected, the screen will return to the below screen and the SSL-VPN Connected balloon will be displayed for short period.

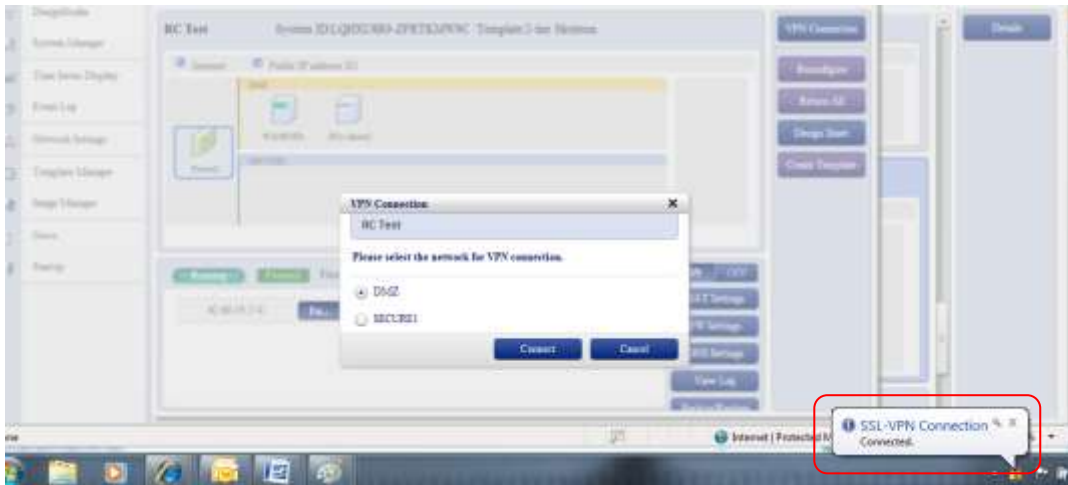


Figure 10 Connect to a VM

After the connection is established, log-in to the VM via Windows Remote Desktop Connection and SSH.

How to Disconnect from a VM

The following procedure explains how to disconnect a SSL-VPN connection. Always disconnect the SSL-VPN connection after use.

1. Double-click or right-click the "SSL-VPN connection" on the taskbar and select "Status"

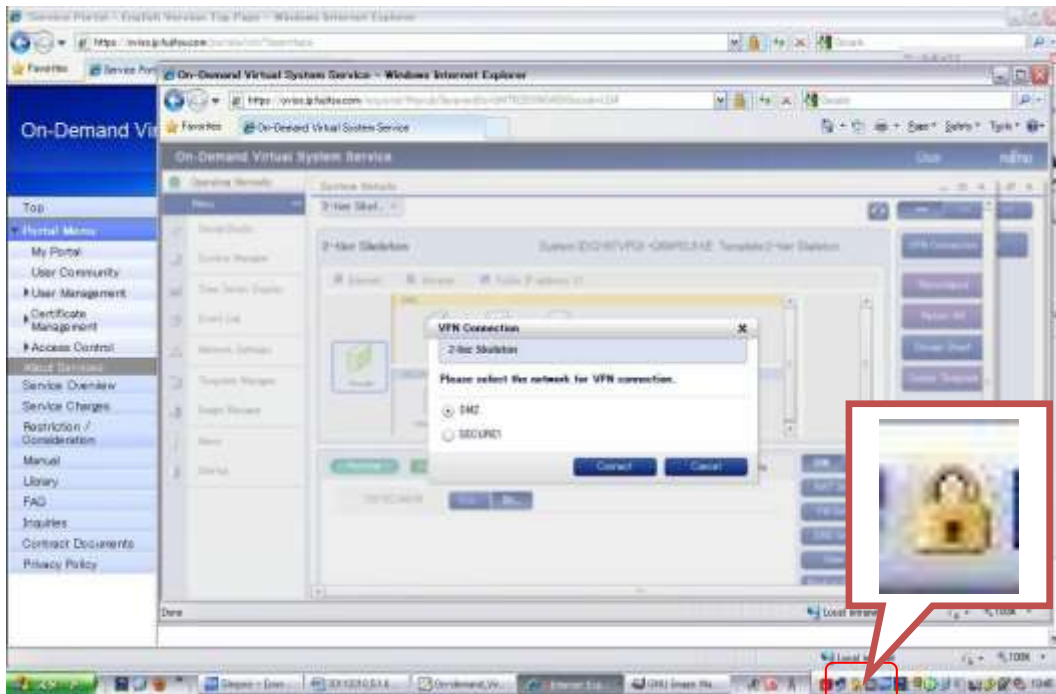


Figure 11 Connect to a VM

2. Click the "Disconnect" button in the SL-VPN Connection dialogue box.



Figure 12 Connect to a VM

3. When the status shows "Disconnect", click the "Logout" button.



Figure 13 Connect to a VM

How to Connect to a Windows VM

The following procedure explains how to connect to a Windows virtual machine using Remote Desktop (RDP).

1. Click "Start", "All Programs", "Accessories" and then "Remote Desktop Connection"

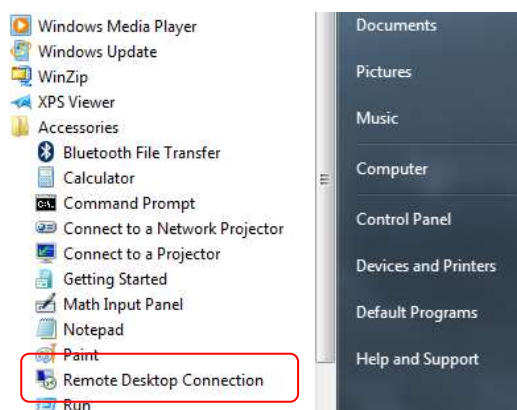


Figure 14 Connect to a VM

- From this front screen, click the drop-down "Options" button.



Figure 14 Connect to a VM

The Computer is the IP address of the target VM. The User name is "Administrator".

- Once the Computer and User name are set, click the "Local Resources" tab.



Figure 15 Connect to a VM

The "Local Resources" tab enables the VM access to the client PC's Hard Drives, Printers and Clipboard etc.

- Click the "More" button.



Figure 16 Connect to a VM

5. Click the "+" button to open up the list of drives and check all those that will be required by the VM and click the "OK" button.



Figure 17 Connect to a VM

6. Click the "Connect" button



Figure 18 Connect to a VM

7. Click "Connect" again at the confirmation screen

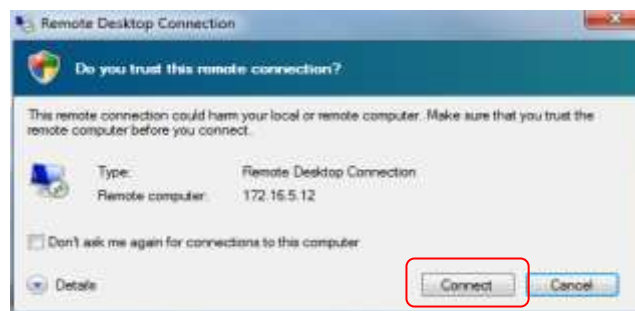


Figure 19 Connect to a VM

8. Enter the password to access the VM and click the "OK" button.



Figure 20 Connect to a VM

9. The VM password is found by clicking the "Initial PW" button of the VM screen.

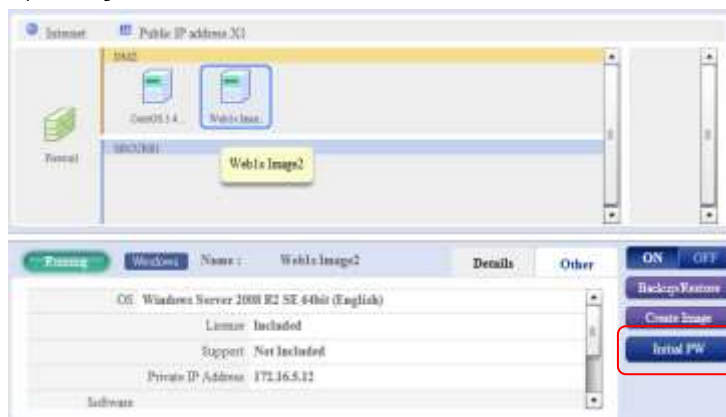


Figure 21 Connect to a VM

10. Click "Yes" at the certification screen.



Figure 22 Connect to a VM

Once the connection has established, the Windows desktop should appear.

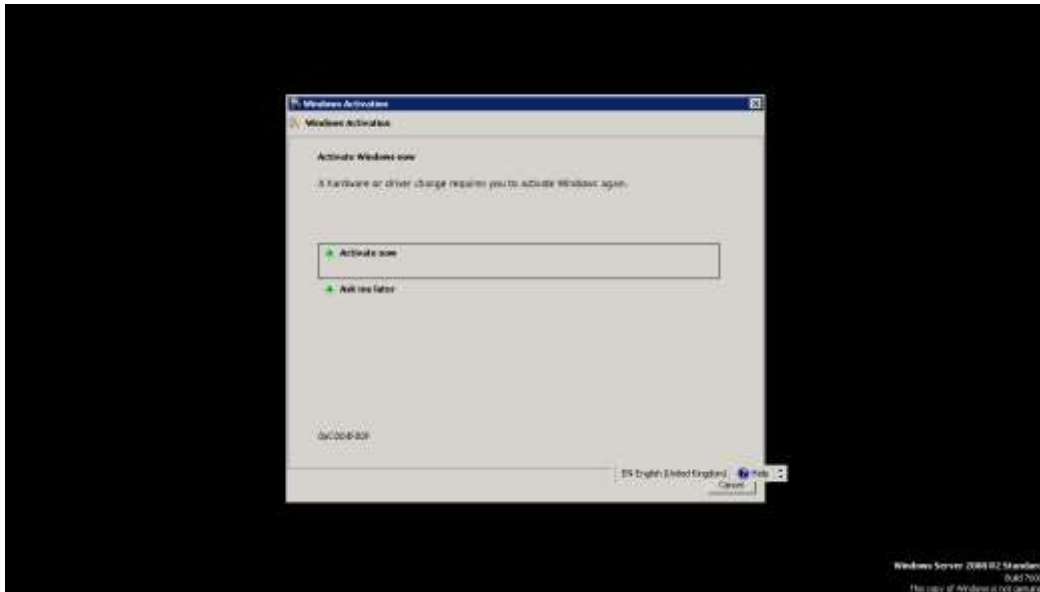


Figure 23 Connect to a VM

How to Connect to a CentOS VM

The following procedure explains how to connect to a CentOS virtual machine.

For a CentOS machine, an external client such as VNCViewer or VisionApp should be used. For this demonstration, we are using VisionApp.

1. From the main desktop, make sure "Connections" is highlighted and click "New"

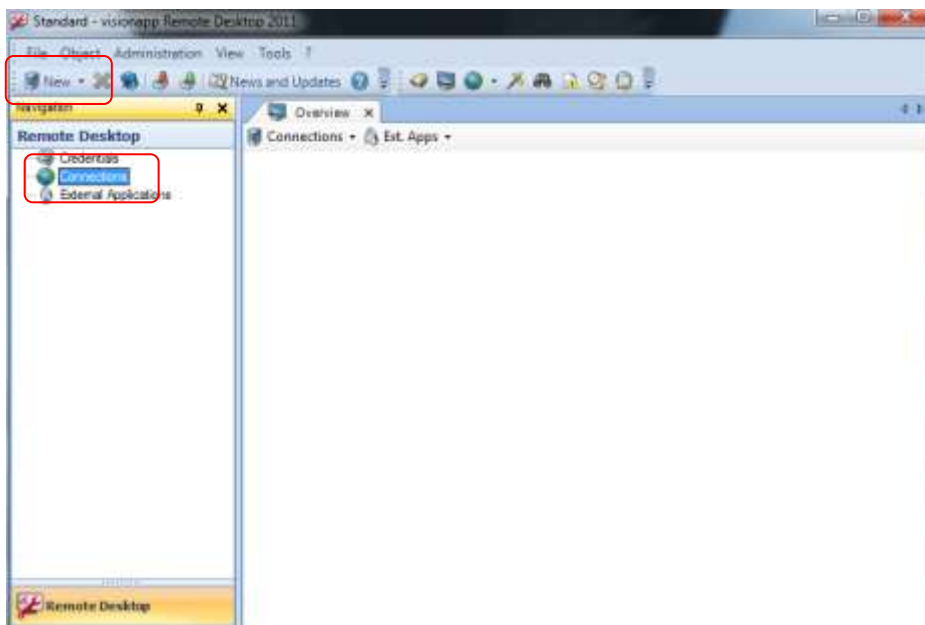


Figure 24 Connect to a VM

2. Click the "Create a single connection" button and then "Next"

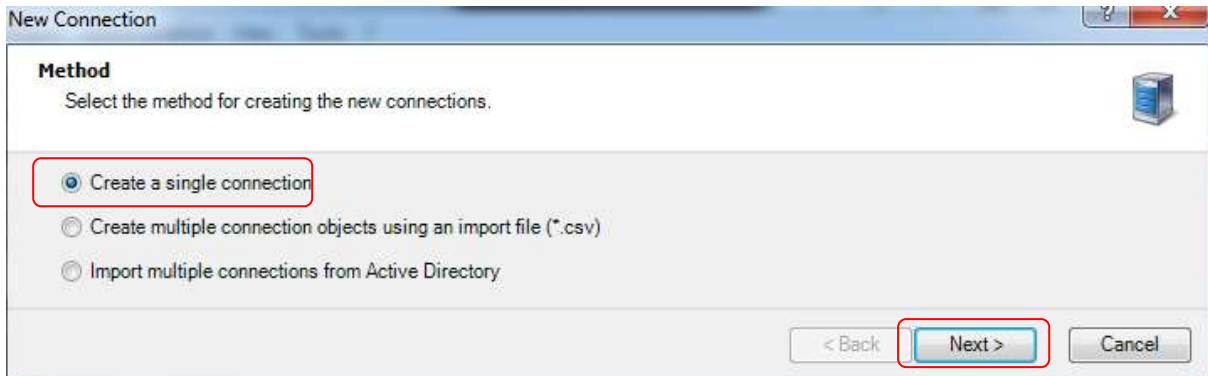


Figure 25 Connect to a VM

The New Connection screen is opened at the "General" tab. The three things to change are "Name", "Computer name" and "Protocol".

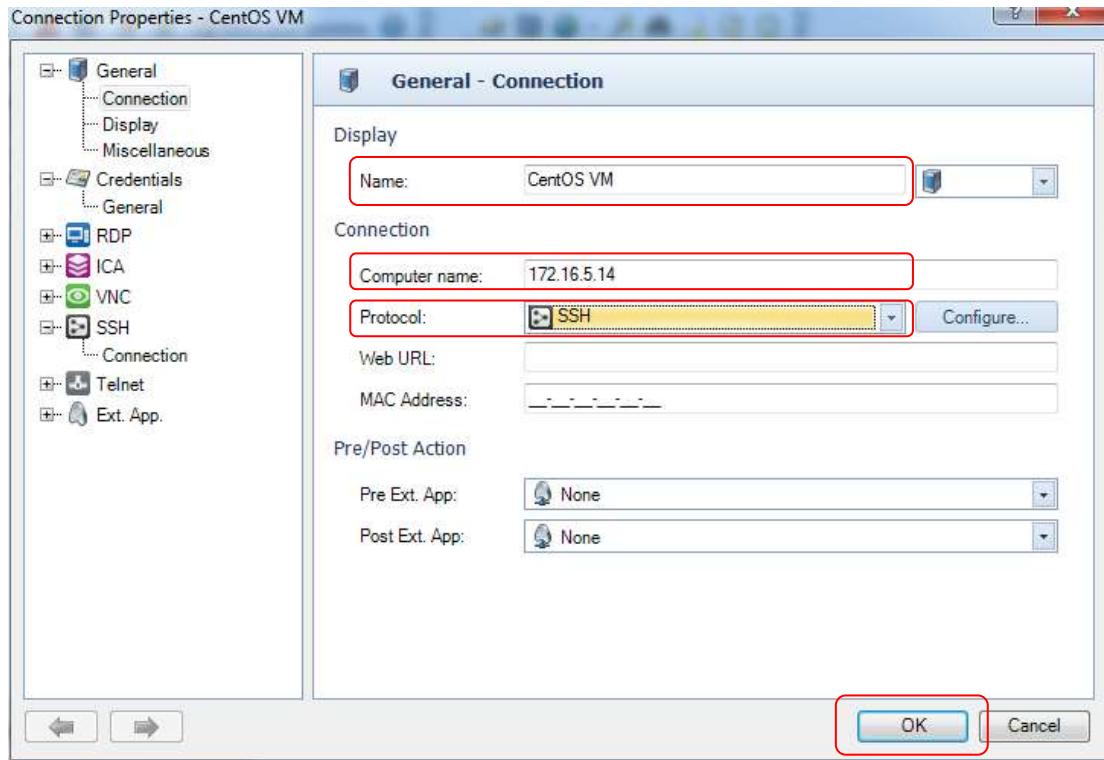


Figure 25 Connect to a VM

- Name:** It is advisable to give the a connection a unique name as VisionApp stores all connections for future use.
- Computer name:** This is the Private IP Address of the target VM.
- Protocol:** This is changed on the drop-down menu to SSH.

3. Once these changes are made, click the "OK" button.

The main desktop appears displaying the new connection

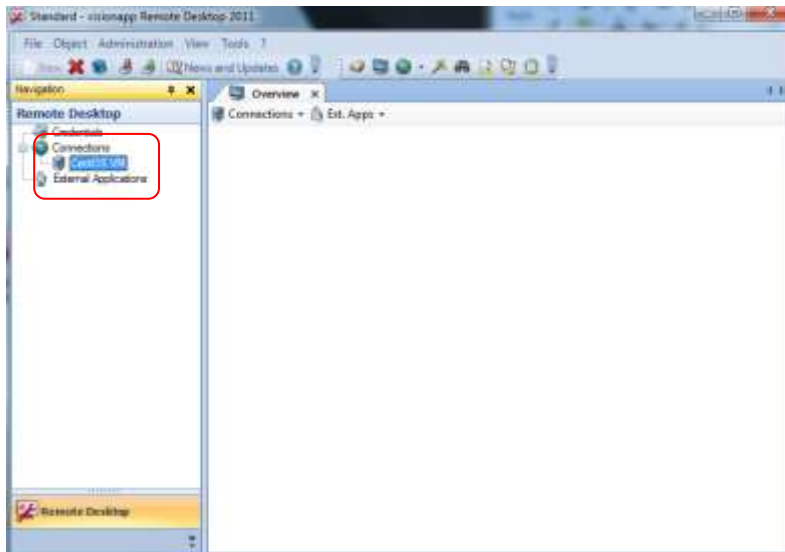


Figure 26 Connect to a VM

4. Right click the required connection and click "Connect" from the menu.

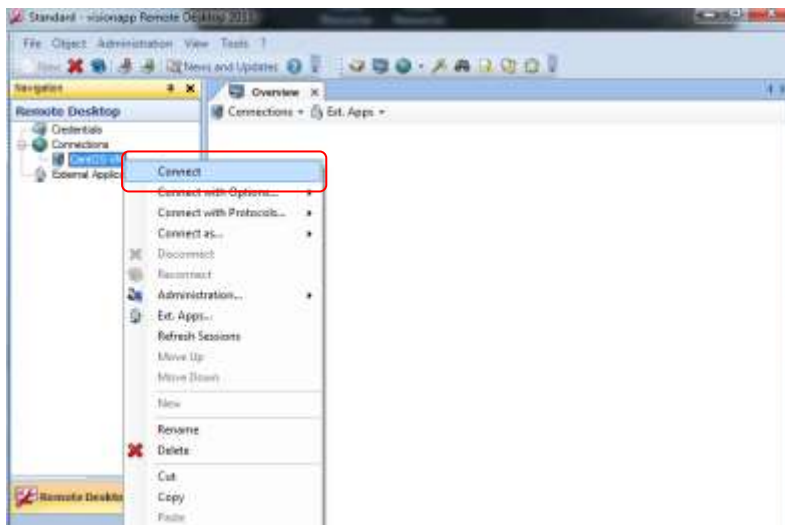


Figure 27 Connect to a VM

After a successful connection, the CentOS desktop is displayed.

5. At the "login as:" prompt, type "root" then "Enter"

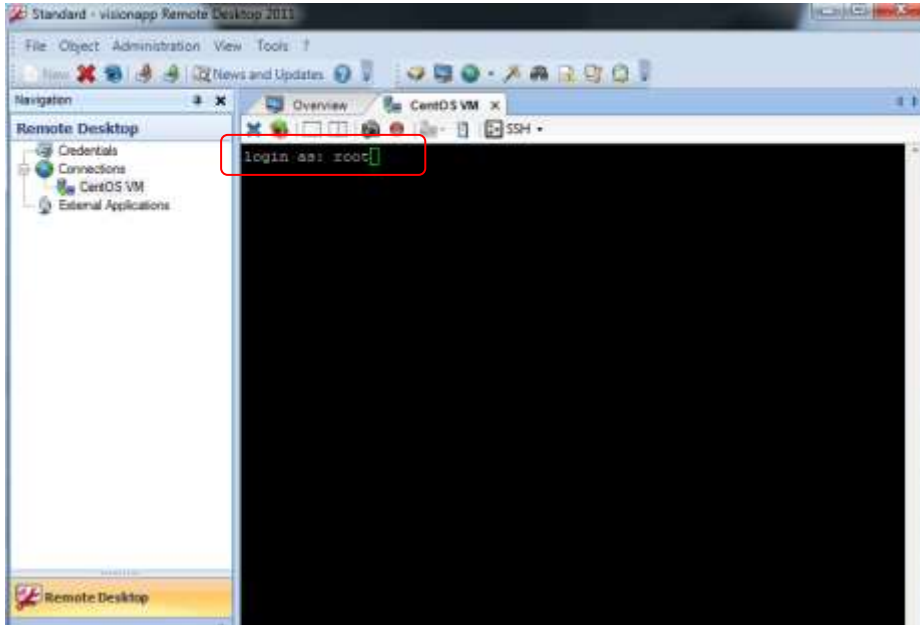


Figure 28 Connect to a VM

The password request then appears.

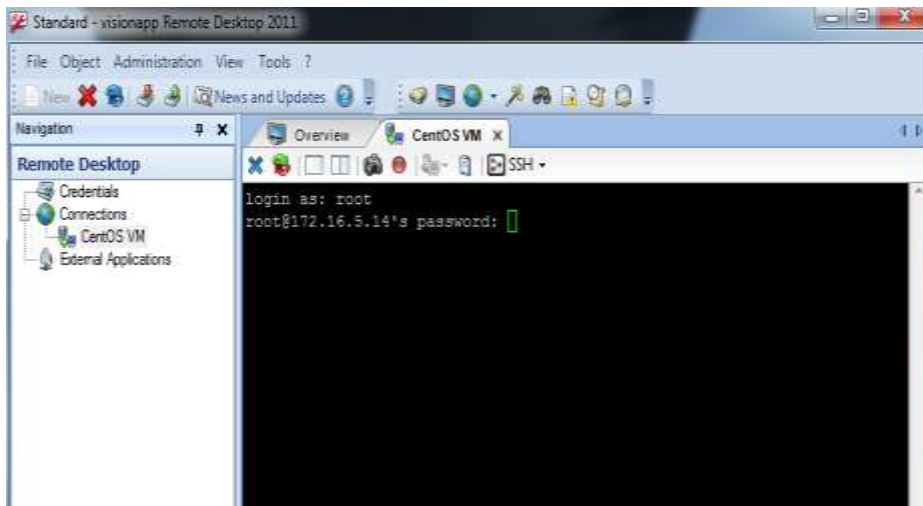


Figure 29 Connect to a VM

- The VM password is found by clicking the "Initial PW" button of the VM screen.

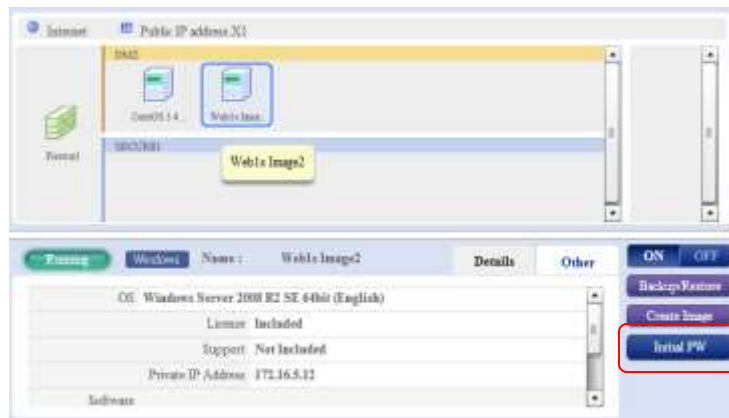


Figure 30 Connect to a VM

- Type in the password and then "Enter"

The following screen is shown following a successful connection.

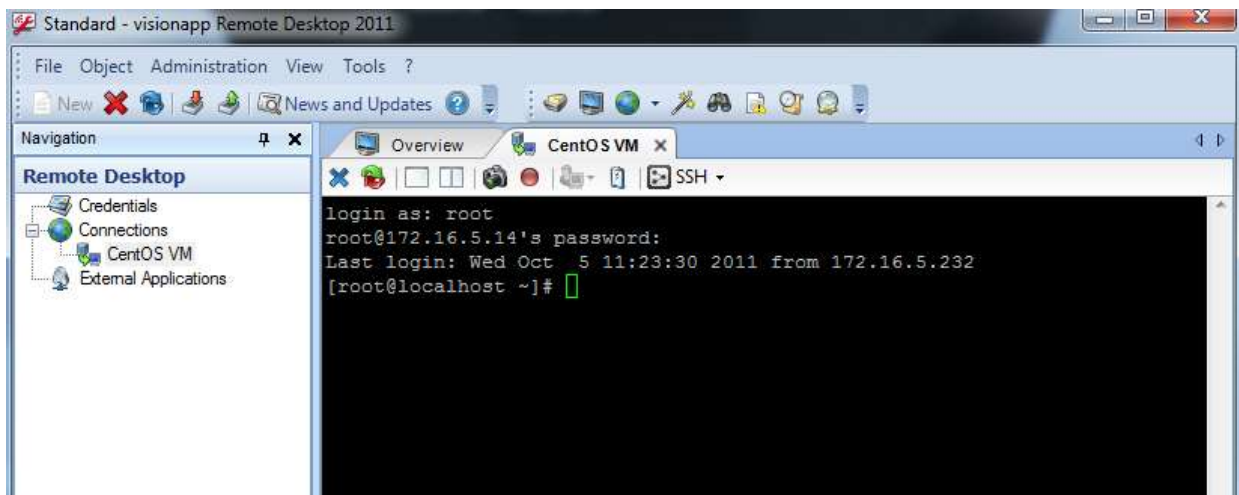


Figure 31 Connect to a VM