

FUJITSU Cloud Service S5

Creating, Modifying and Deleting Virtual Systems

This guide describes the process for creating and deleting virtual systems in the FUJITSU Cloud Service S5

How to Create a New Virtual System

1. To create a new Virtual System, select "My Portal" from the Start-Up Menu



Figure 1 My Portal

2. A new window will open, select "Design Studio"

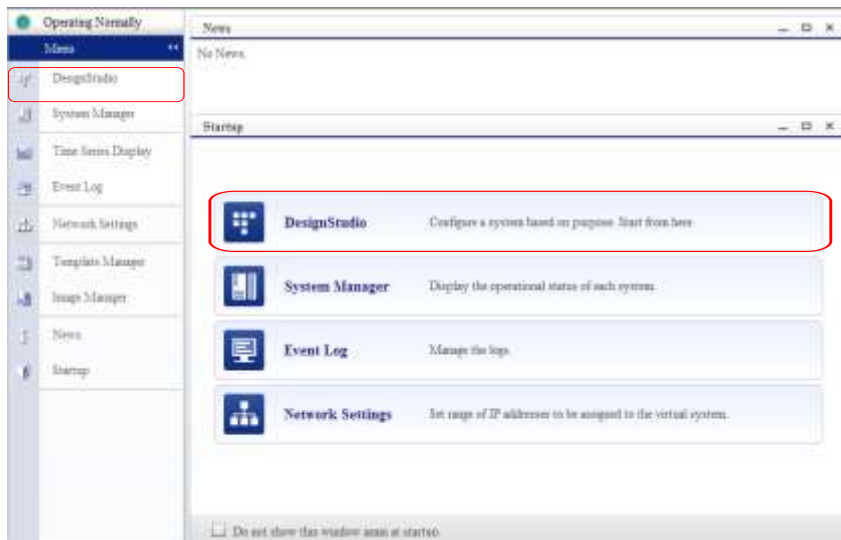


Figure 2 Design Studio

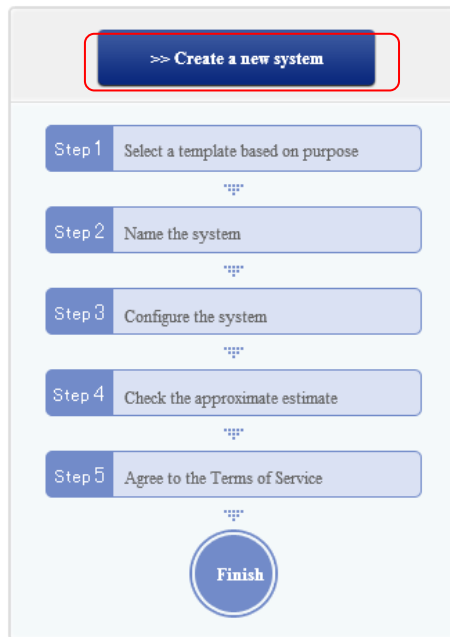


Figure 3 Create and Delete Virtual Systems

3. Click the "Create New System" icon

How to Select a System Template

4. When a System Template is selected, the Template details are displayed.

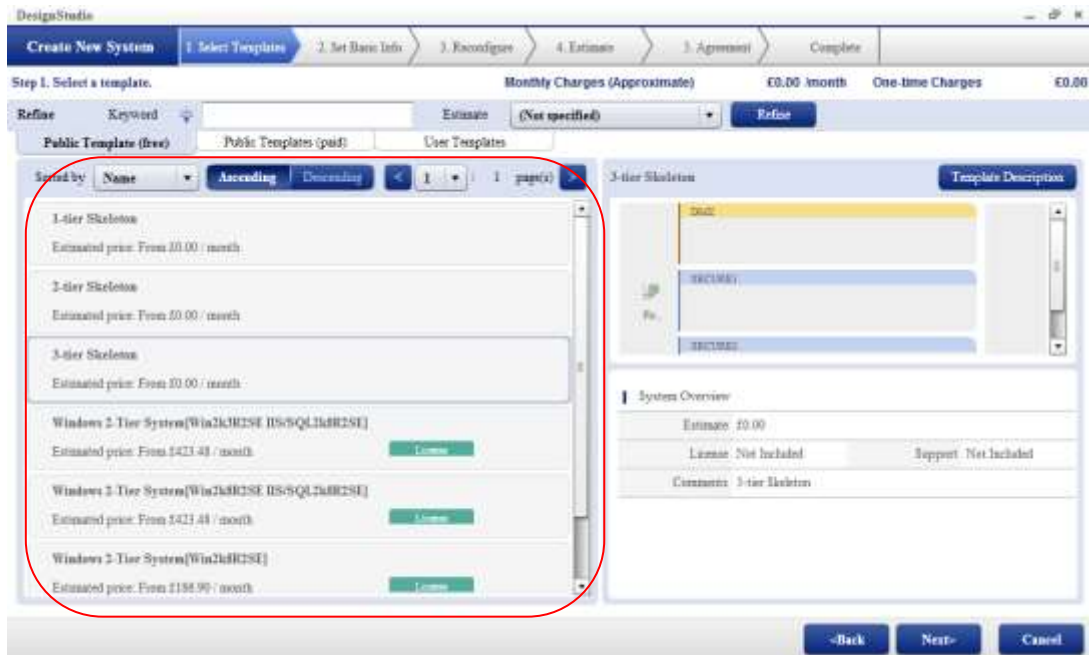


Figure 4 Create and Delete Virtual Systems

Templates available

Public template (free)	Templates in this tab are prepared by default and it is possible for Users to use them free of charge.
Public template (paid)	Templates in this tab are prepared by default. Users must pay a one-time cost to use them.
User Template	Templates in this tab are created by Users with the template creation function. These templates are only available for Users within the same contract.

Screen Functions

Refine	Users can filter the System Templates by keyword or approximate cost.
Sorted by	Users can sort the order of System Templates by the template name or approximate fee
Template Description	Users can refer to the description of selected Templates.

5. Once you have selected the required Template, you will need to assign a unique name to the Virtual System and select the appropriate network connection(s).



Figure 5 Naming the Virtual System & Setting the Network Connection

6. You have a choice of four network connections:
 - a) No connection – only an SSL-VPN connection is allowed to VMs within the Virtual System
 - b) Internet – Allow network traffic from the Internet to the Virtual System
 - c) Intranet – Allow network connection between Virtual Systems within your account or when a dedicated MPLS link has been previously configured between physical infrastructure and this Virtual System
 - d) Internet & Intranet

Clicking on the blue “connector” initiates the connection
 After selecting the network topology, click the “Next” button.

Add VMs / Load Balancers / Additional Disks

The steps to add VMs, load balancers, and additional disks are described in the following sections. The main modification screen consists of 3 areas:

- Configuration map area – Shows the individual contents of the Virtual System and their current status
- Property area – Shows the name and specification of individual components
- Additional option area – Additional components – Servers, Disk, Load Balancers are added to the Virtual System from here

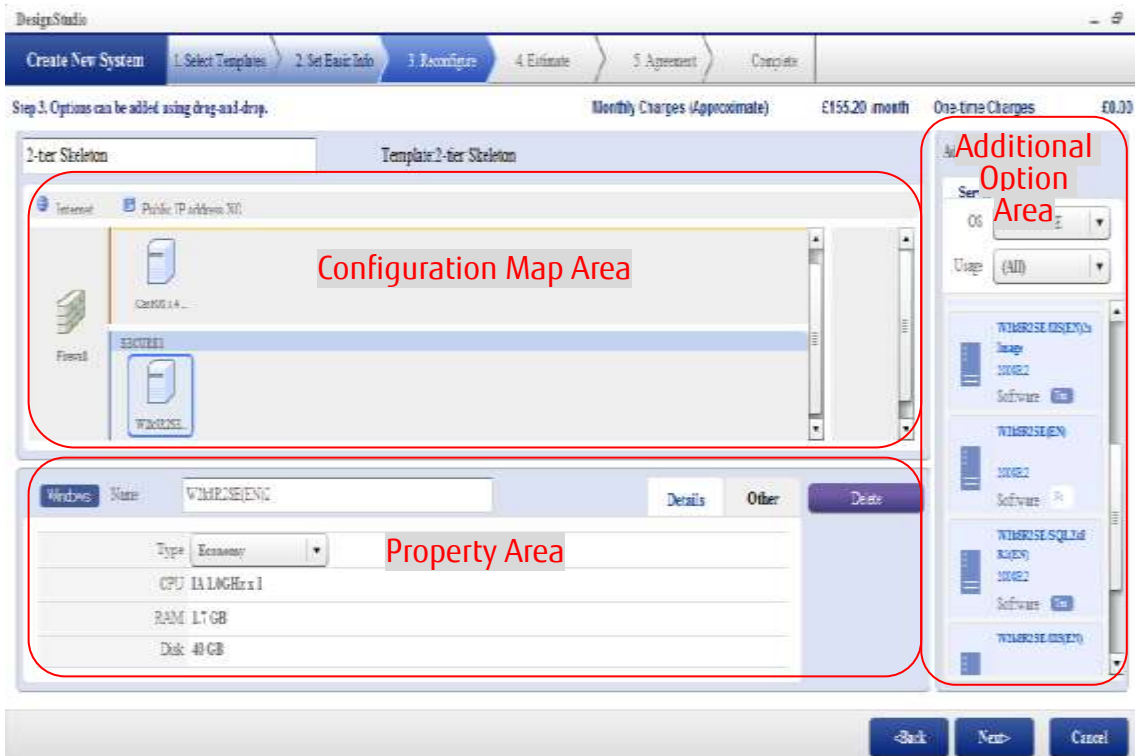


Figure 6 Configuring the Virtual System (1)

There are character restrictions when naming VMs, SLBs and additional disks

- Maximum number of letters: Up to 256 one-byte or 85 two-byte characters
- Nonusable characters: ['] (single quotation) and ["] (double quotation)
- It is NOT possible to put the same names to VMs, SLBs, and additional disks within the same virtual system.

1. Adding VMs

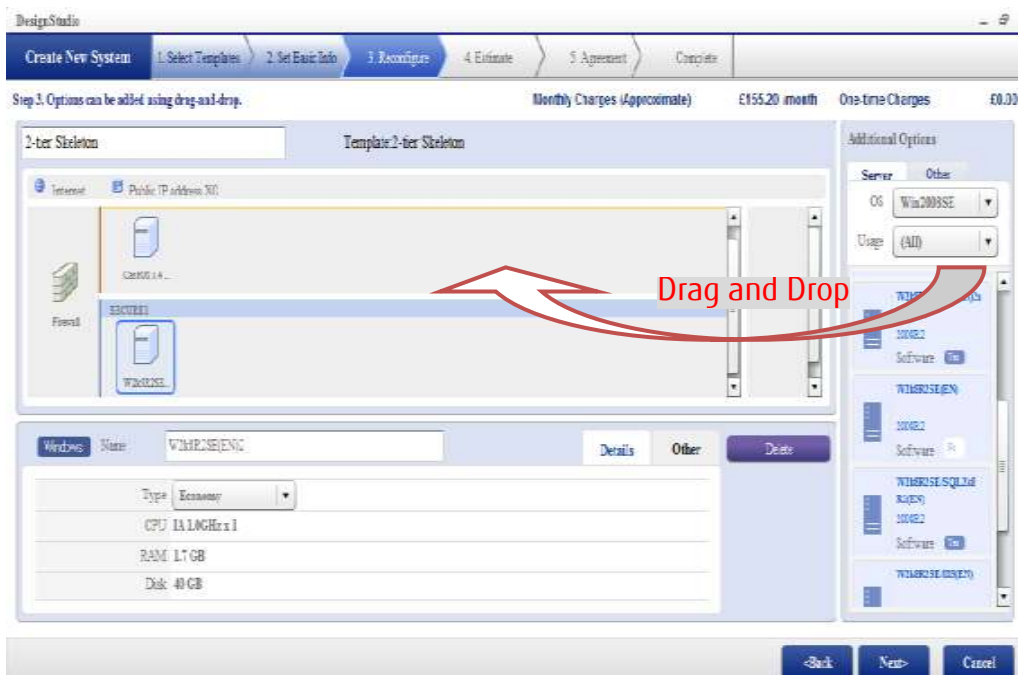


Figure 7 Adding VMs

Users can add VMs by dragging and dropping a VM icon from the “Additional Option” area to the “Configuration Map” area. Users can select the network segment (DMZ, SECURE1, or SECURE2) as a destination. Drop the icon into a target network segment on the “Configuration Map” area.

2. Add Load Balancers and Additional Disks.

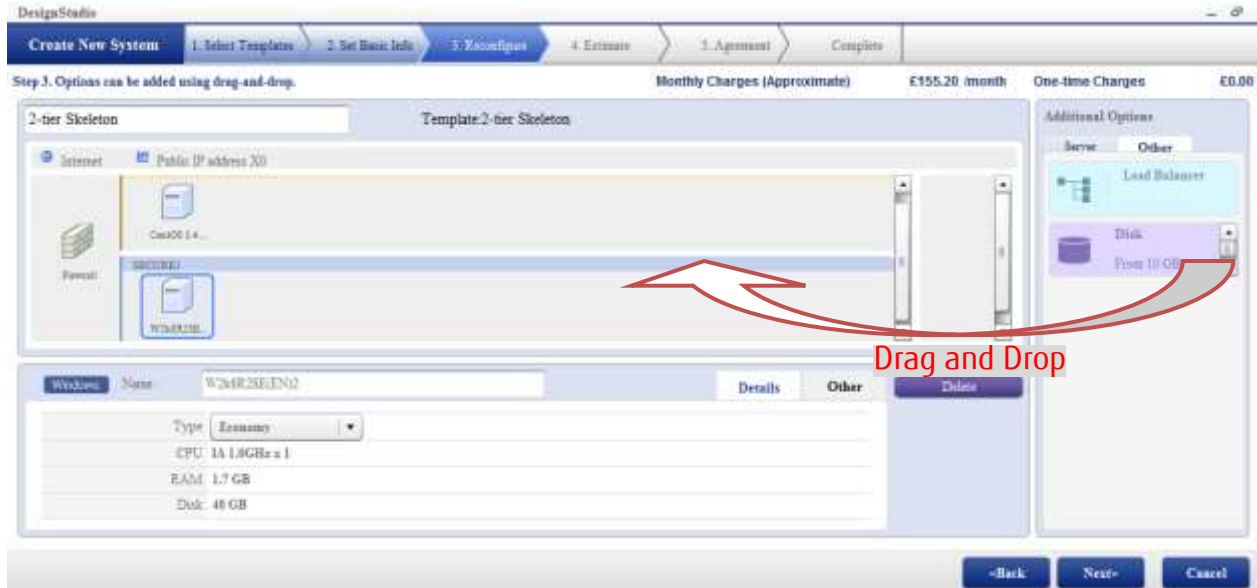


Figure 8 Adding Load Balancers and Disks

Users can select and add Load Balancers and Additional Disks from the “Other” tab that is in the “Additional Option” area. Load Balancers icons are dropped into the same network segment as the VMs. Disk icons are dropped onto the target VM itself.

When Users attach an additional disk to a running VM, it is necessary to stop the attaching VM in advance.

3. Confirm the added configuration.

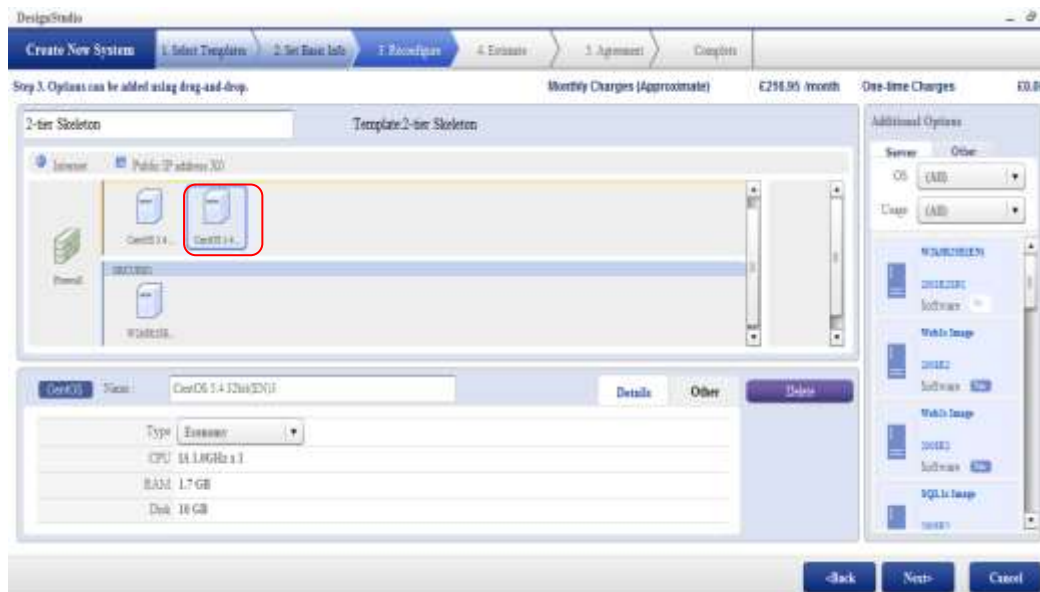


Figure 8 Confirming the Configuration

Users can check the new configuration in the Configuration map area and click the “Next” button to confirm the configuration.

Supplementary Note: Users cannot add a Firewall.

Deleting VMs / Load Balancers / Additional Disks

The steps to delete VMs, load balancers, and additional disks are described in the following sections.

Deleting a VM

When Users select the VM or Load Balancer, as well as the component information, a “Delete” button is displayed. Click the “Delete” button to delete a selected VM or Load Balancer.

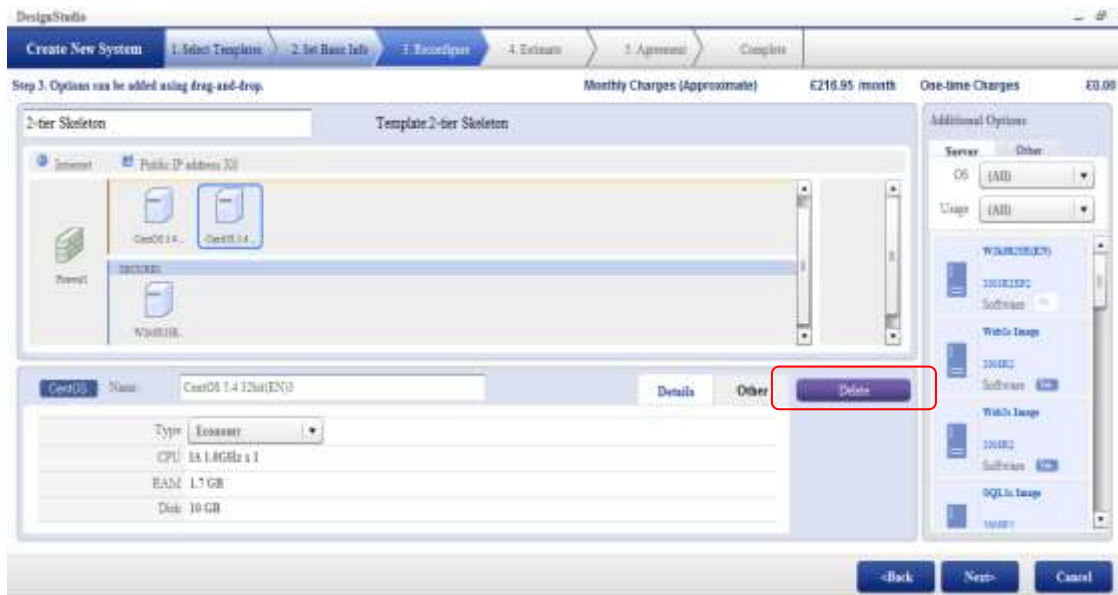


Figure 9 Deleting a VM

When Users delete a running VM or a Load Balancer, it is necessary to stop the VM or Load Balancer in advance.

Deleting Additional Disks

1. Select the VM which has an Additional Disk to delete.
2. Choose the disk to delete from the pull-down menu in the “Property” area.
3. After selecting the targeted disk, click the “Delete” button.

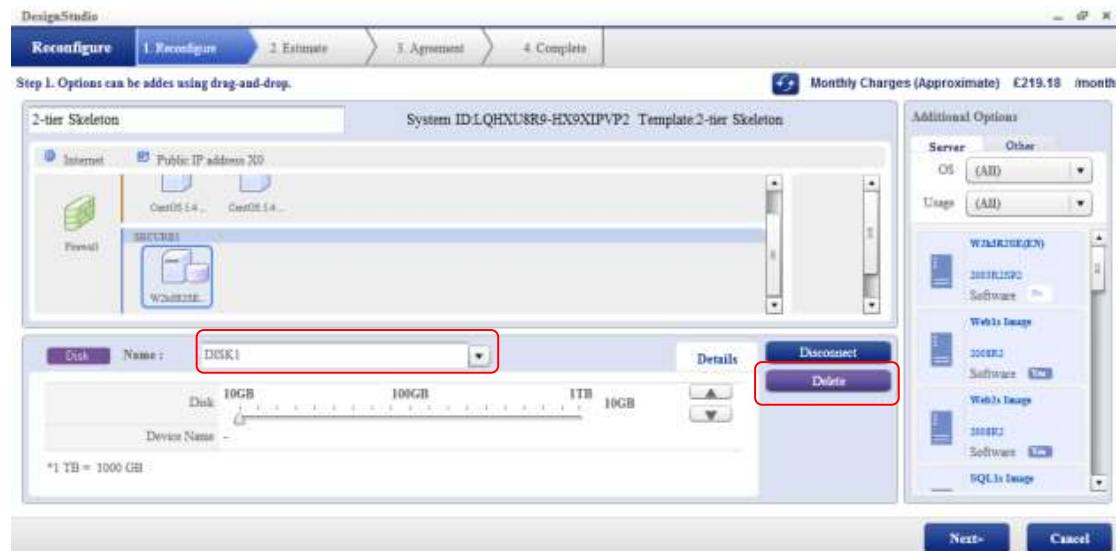


Figure 10 Deleting Additional Disks

When Users delete Additional Disks attached to a VM, it is necessary to stop the VM in advance.

Supplementary Note: Users cannot delete the Firewall.

Changing the type of VM

There are four Types of VM configuration – Economy, Standard, Advance and High Performance. The VM specifications and performance increase through the options. The following procedure explains how to change the type of VM.

To change the VM Type,

1. Select the VM in the “Configuration Map” area.
2. Select the “Details” tab in the “Property” area then choose the new VM type by the pull-down “Type” menu.

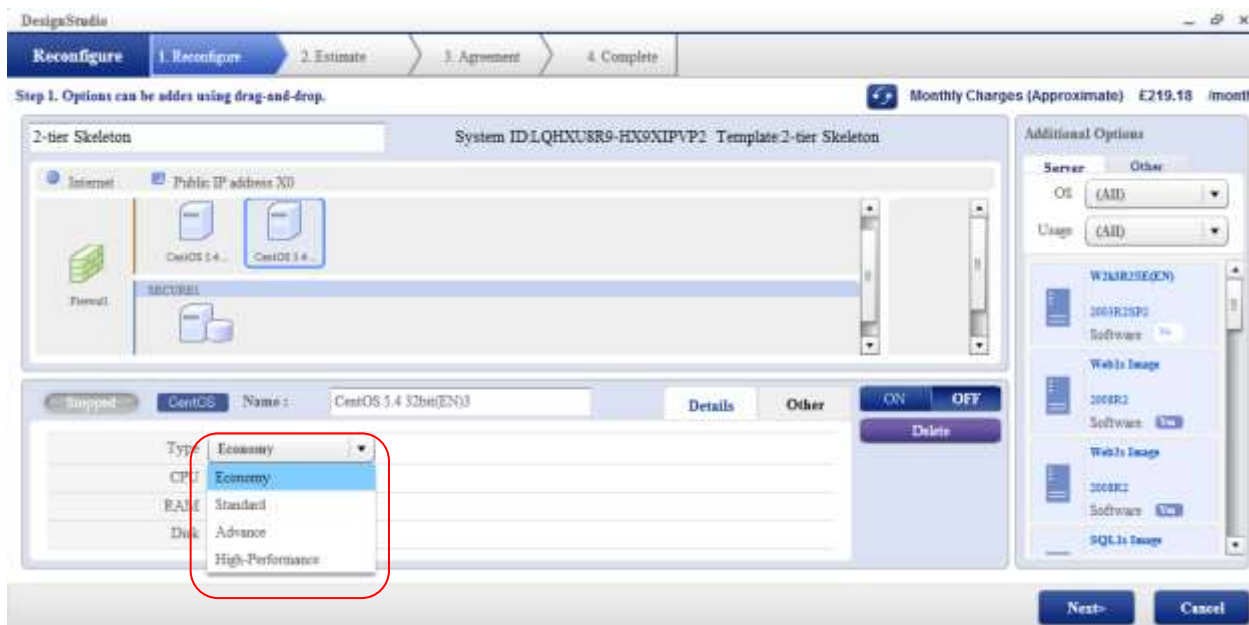


Figure 11 Changing the type of VM

When Users modify the Type of a running VM, it is necessary to stop the VM in advance.

Supplementary Note1: Please read [FUJITSU Cloud Service S5 Overview] for details of VM types.

Supplementary Note2: Users must check the VM minimum requirements for each OS when choosing the VM Type.

Determine the Size of Additional Disk

The following procedure explains how to change the size of Additional Disk.

1. Select the VM that has the Additional Disk from the “Configuration Map” area.
2. Choose the Additional Disk from the pull-down menu next to Name in the “Property” area.
3. Users can then move the sliding bar to determine the amount of required Additional Disk from 10Gb to 1Tb.

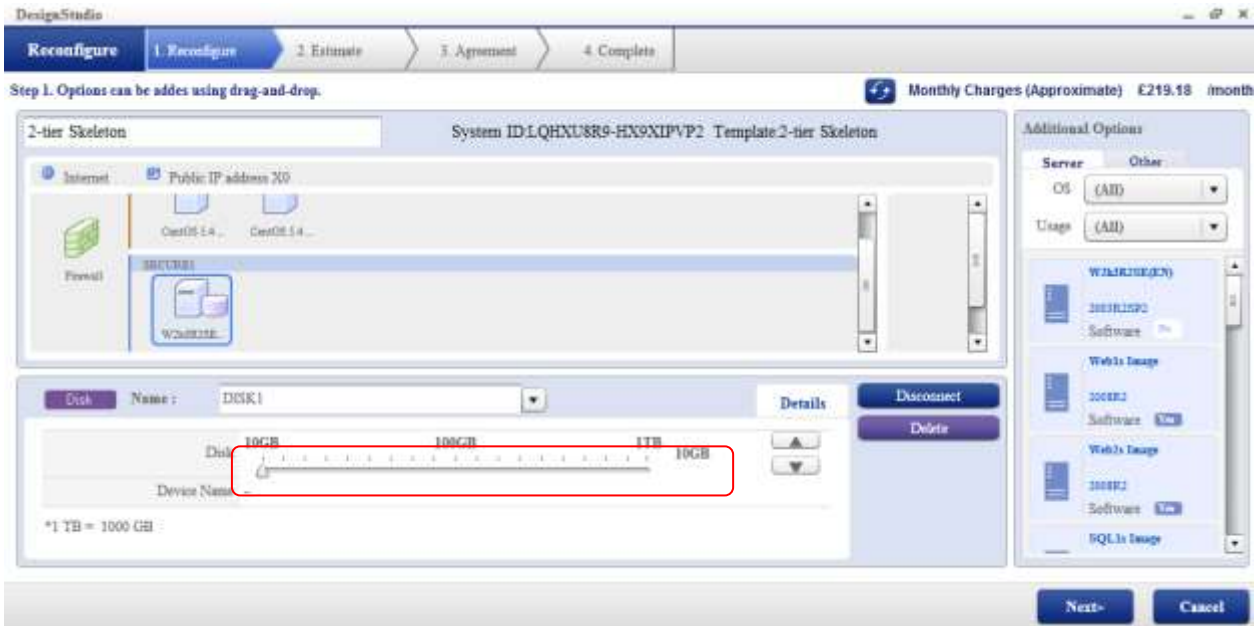


Figure 12 Changing the size of an additional disk

Users can only set the disk size when new Additional Disks are created. It is NOT possible to change the size once disks are created.

Attach / Detach Additional Disks

The following procedure details how to attach or detach Additional Disks from VMs.

To detach Additional Disks,

1. Select the VM that the Additional Disk is attached to.
2. Choose the Additional Disk from the pull-down menu next to Name in the "Property" area.
3. After selecting the Additional Disk, click the "Disconnect" button.
4. The Additional Disk is then detached and moved to the Area for Detached Disks.

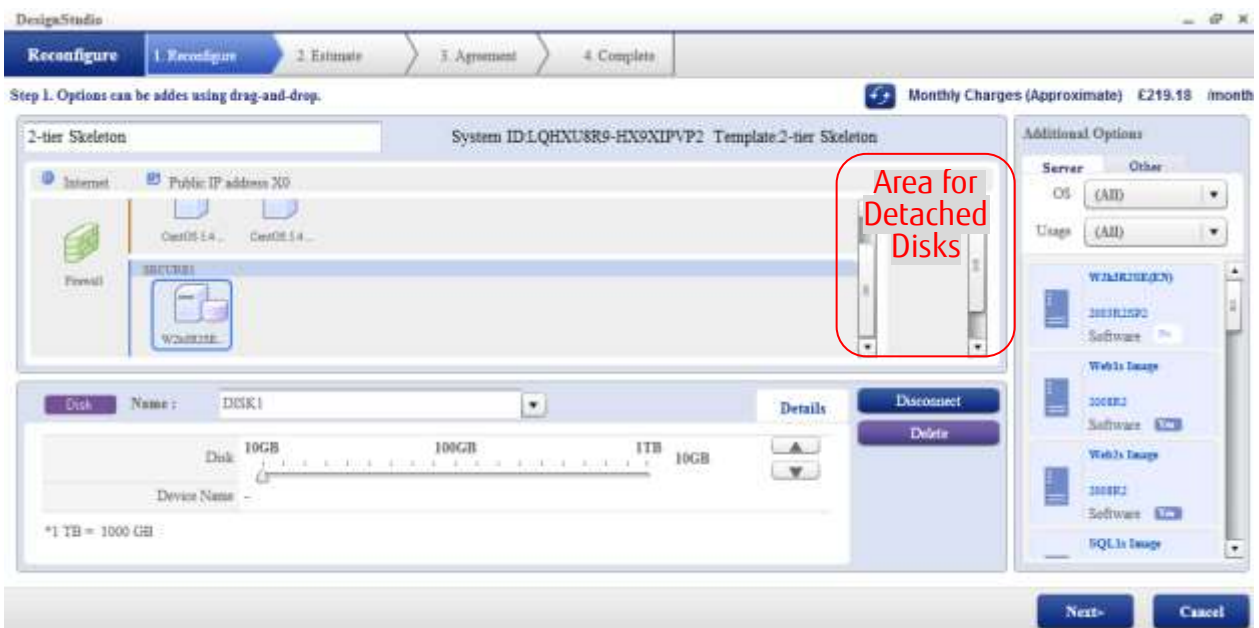


Figure 13 Attaching and detaching additional disks

To attach Additional Disks,

1. Drag and drop the Additional Disk from the Area for Detached Disks to the VM to attach.
2. The Additional Disk is then attached to the VM and the Additional Disk icon disappears from the Area for Detached Disks.

In order to attach / detach an Additional Disk, it is necessary to stop the VM in advance.

Add / Delete Global IP Address

The following procedure explains how to add or delete the Global IP Address.

To add Global IP Addresses,

1. Select the Firewall in the "Configuration Map" area.
2. The number of current Global IP Addresses is displayed in the "Property" area.

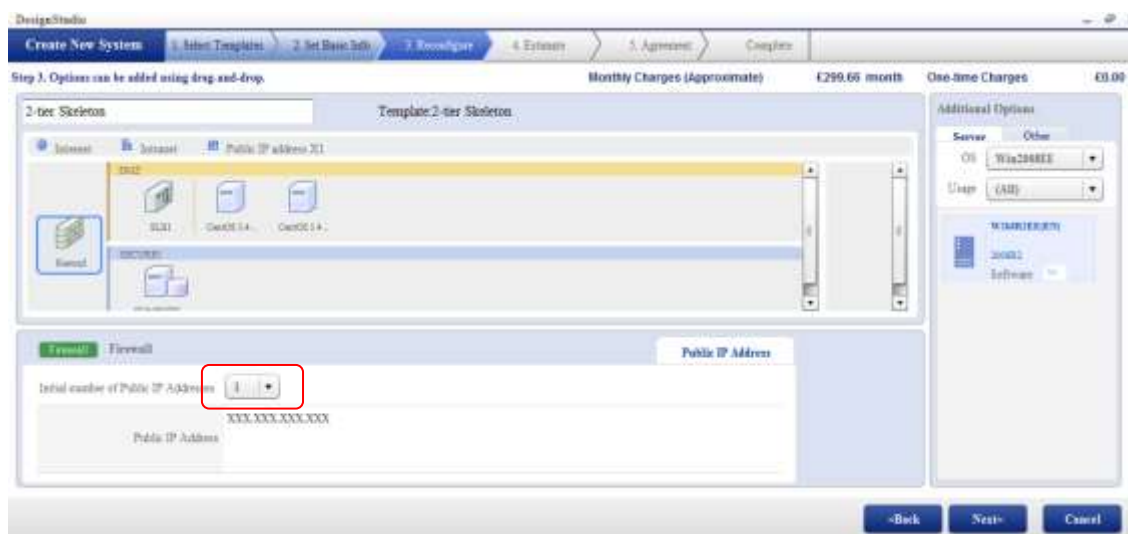


Figure 14 Adding a global IP address

To delete a Global IP Address, click the "Delete" button next to the Global IP Address that Users want to delete.

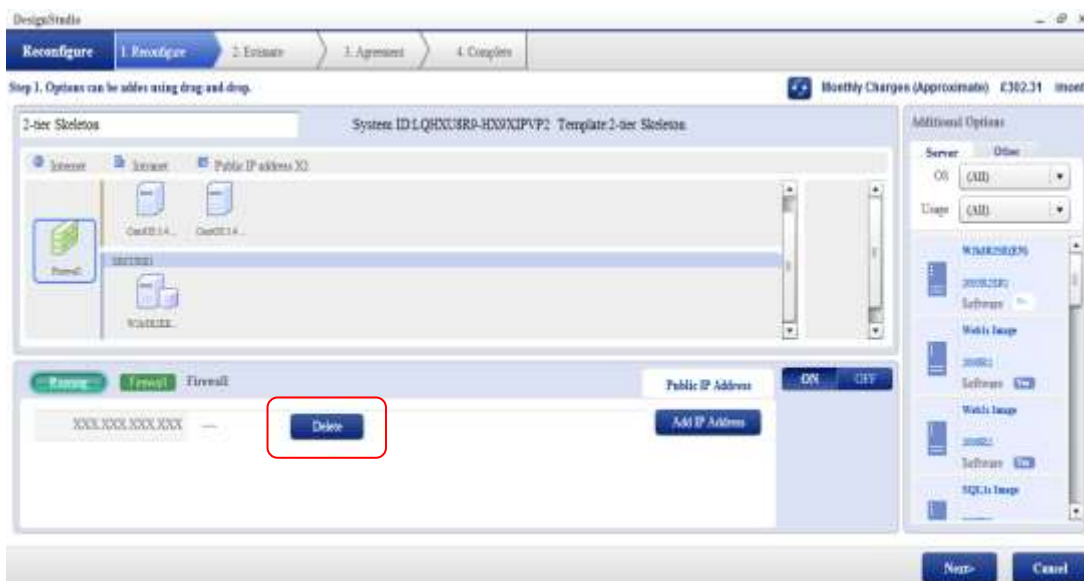


Figure 15 Deleting a global IP address

Supplementary Note 1: The default status of a Global IP Address is disabled. Users must enable the status to activate the Global IP Address.
 Supplementary Note2: To delete a Global IP Address, it must first be disabled.

Modify the Network Access Point

When clicking the “Configuration Map” area (any space other than the icons), the status of the current network connection is displayed.

By clicking either Internet or Intranet icons, Users can modify the Network Access Points of the system.

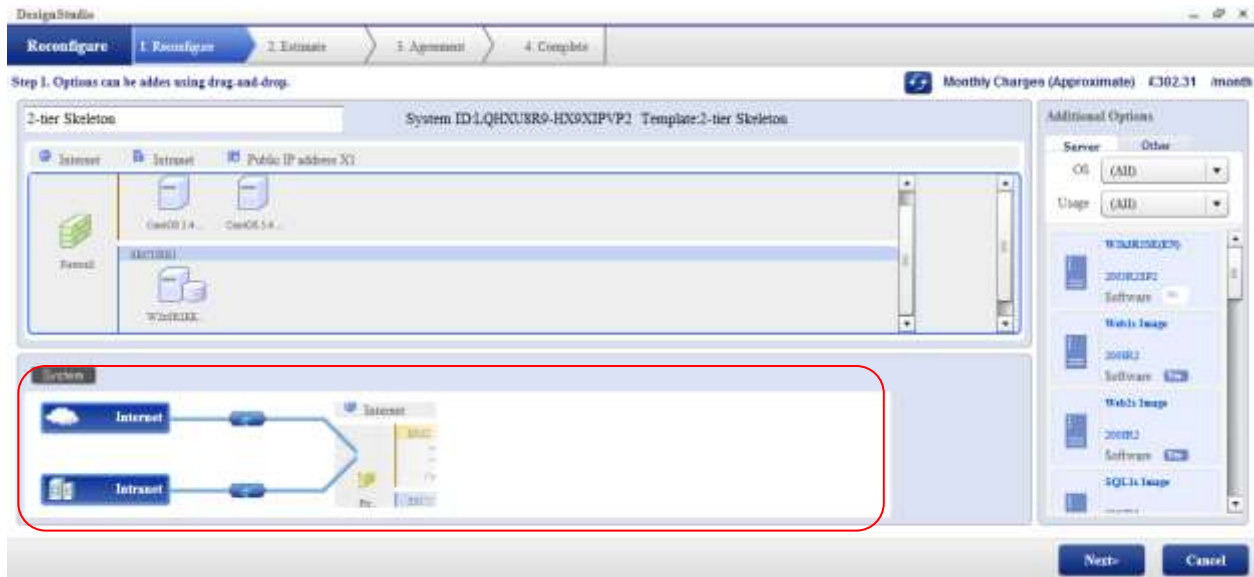


Figure 15 Changing the network connection

Confirm an Approximate Estimate

Once Users have completed the Virtual System configuration, the approximate estimate of usage charges is displayed. The approximate estimate is calculated on the basis that the total system is run for 744 hours (24 hours a day in a 31 day calendar month). All or part of the Virtual System can be turned off at any time so this estimated cost is indeed the highest possible price that the User could pay.

Confirm the approximate estimate then click the “Next” button.

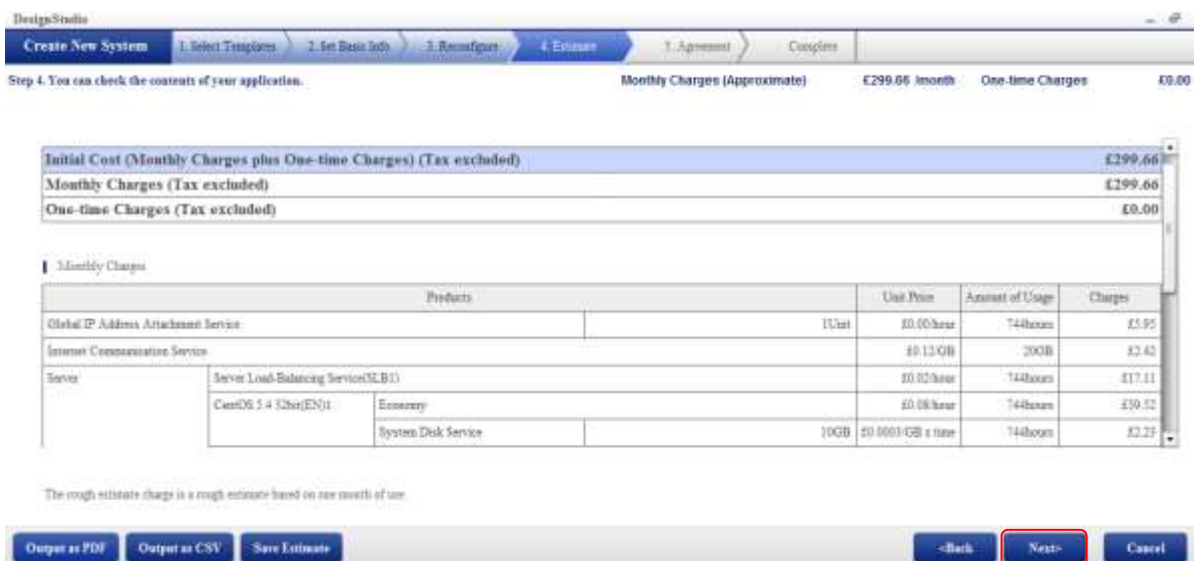


Figure 16 Confirming Estimation

Screen Functions

- PDF Output: Users can download the approximate estimate in PDF format.
- CSV Output: Users can download the approximate estimate in CSV format.
- Save Estimate: Users can save the Virtual System configuration and interrupt the process of creating a Virtual System.

When Users click the "Save Estimate" button, the Virtual System configuration is saved. Users can save a configuration for a while and use the saved configuration to create a Virtual System later.

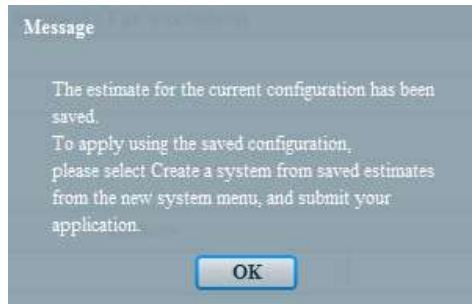


Figure 17 Saving an Approximate Estimate

Agree to Terms of Service and Execute to Create a Virtual System

To complete the creation of a Virtual System the User must read and agree to the Terms of Service.

1. Check the Tick Box "I agree to the Terms of Service"
2. Click "Final Confirmation"

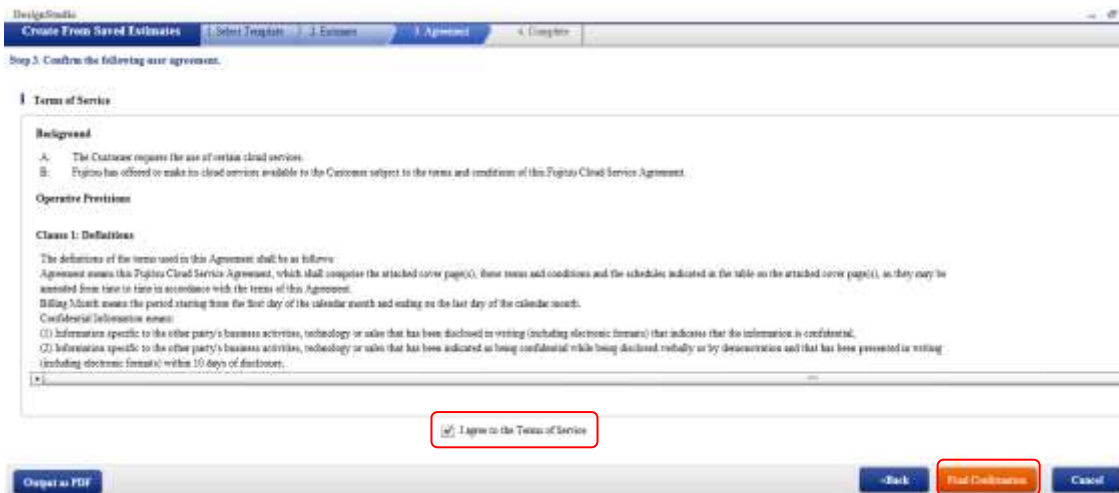


Figure 18 Agree to Terms of Service and Execute to Create a Virtual System

When Users click the "Output as PDF" button, they can download the Terms of Service in PDF format.

The Virtual System is then deployed and will be ready within 15 minutes.

How to Delete a Virtual System

Before a Virtual System can be deleted (returned), all of the Virtual System's resources must be stopped including the Firewall

1. Turn off all virtual resources including Firewalls
 Note: any global IP addresses must be disabled before the Firewall can be stopped
2. Click the "Return All" button in the "System Details" window.

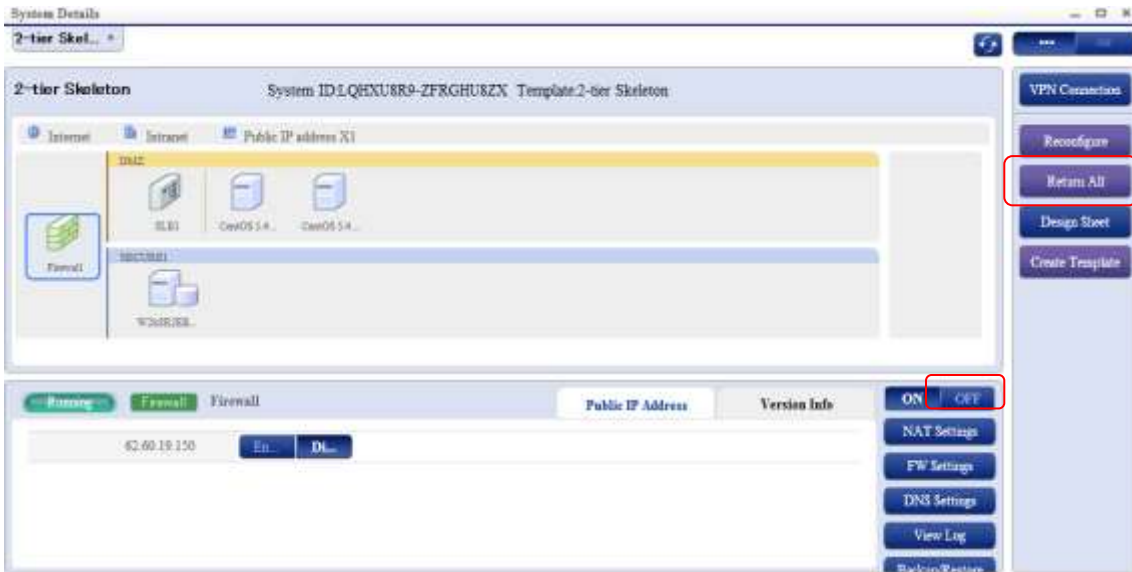


Figure 19 Stopping and returning Virtual Resources

3. Confirm the Virtual System to return (delete) by clicking next

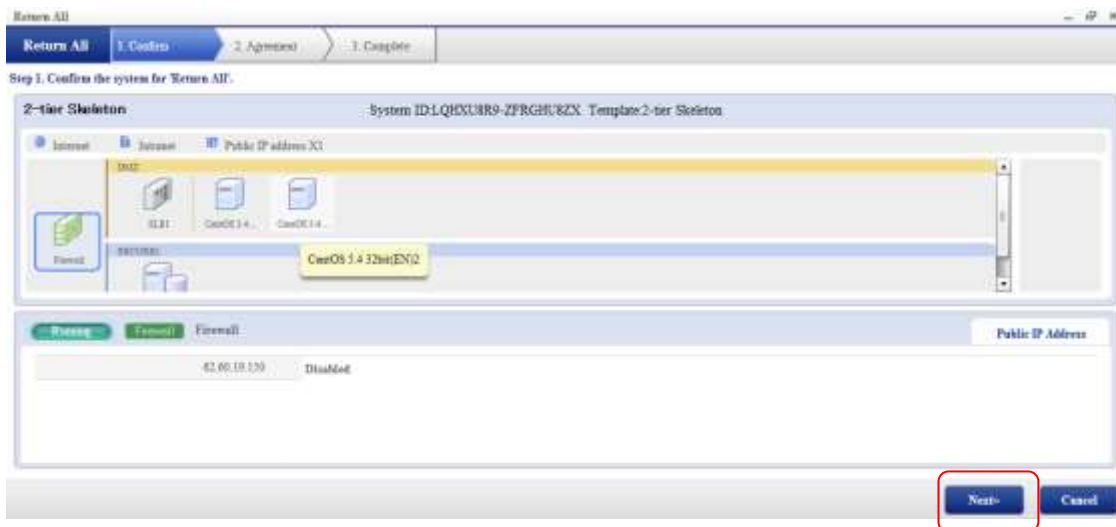


Figure 20 Confirm deletion of Virtual System

4. Agree to Service Usage Contract

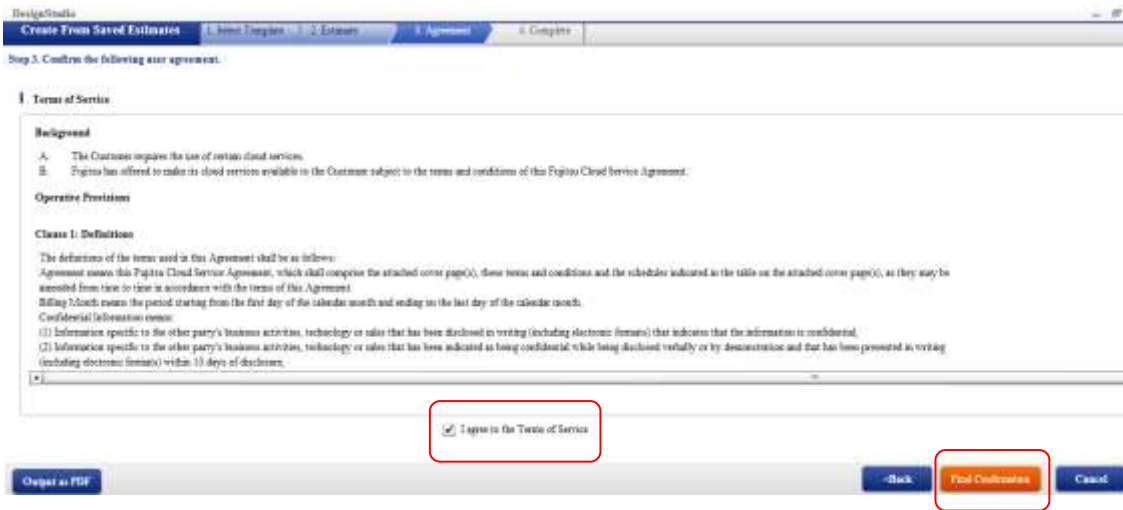


Figure 21 Agree to Terms of Service

When Users click the “Output as PDF” button, they can download the Service Usage Contract in PDF format.

After Users agree to Service Usage Contract and click the “Final Confirmation” button, FUJITSU Cloud Service S5 starts to delete the Virtual System.