

FUJITSU Cloud Service S5 Disk Management

This guide describes the process for backing up, restoring and deleting disks in the FUJITSU Cloud Service S5

How to Backup System Disks

Select the "System Manager" from the Startup menu and choose the required Virtual System.

1. Click the "Details" button

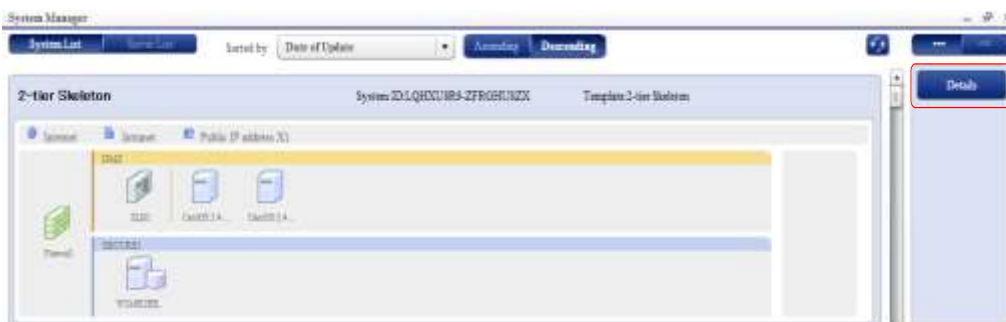


Figure 1 Managing Disks

2. Select the correct VM and click the "Backup Restore" button.

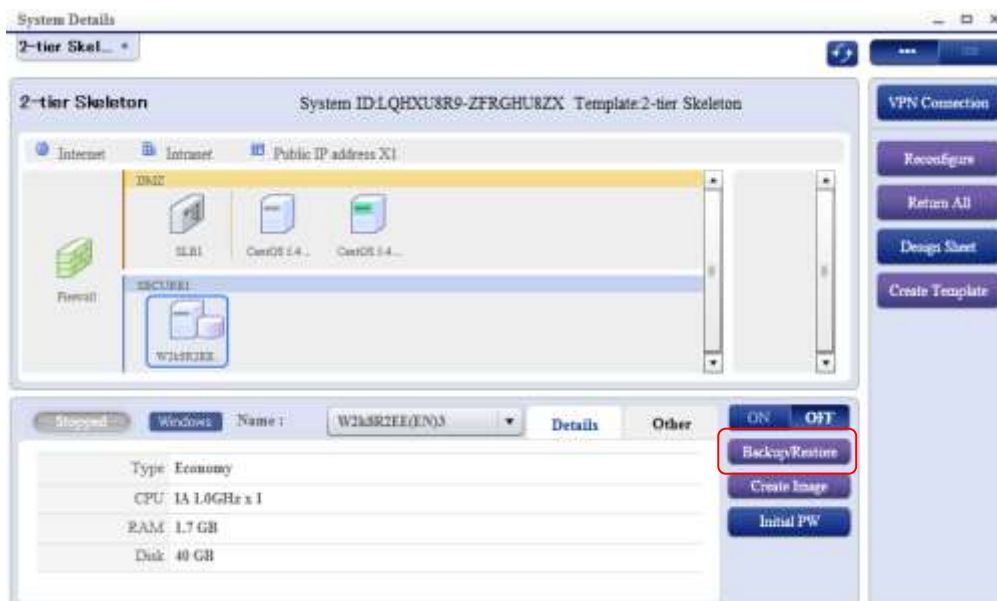


Figure 2 Managing Disks

Note: The VM must be 'stopped' before a backup of any disk can take place.

3. Click the "Start Backup" button.

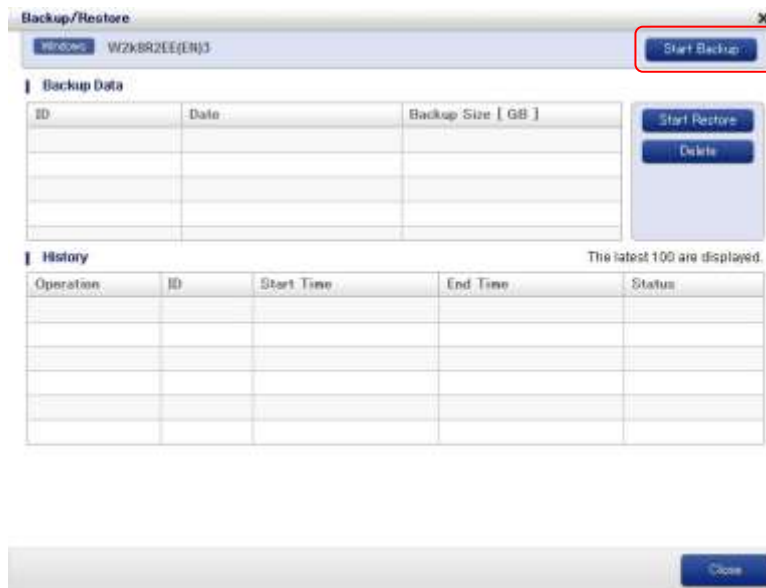


Figure 3 Managing Disks

4. Confirm the Billing Approval and click the "Yes" button.

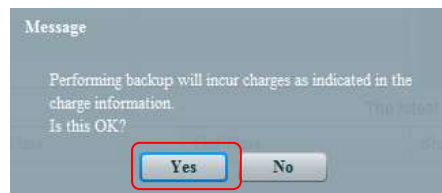


Figure 4 Managing Disks

5. A notice that the Backup has started is displayed, so click the "OK" button.



Figure 5 Managing Disks

6. Completion of the Backup is confirmed on the "System Details" screen.

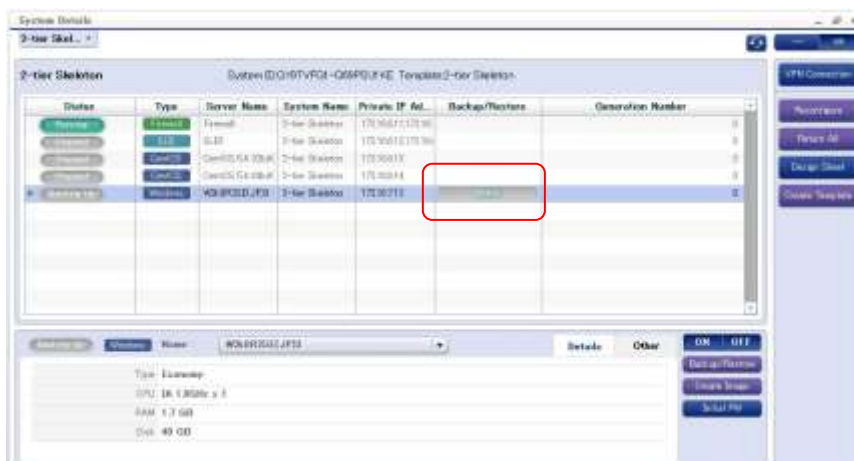


Figure 6 Managing Disks

Users can confirm the Backup status by switching from to “List Display” of the “System Details” window. When the gauge is full, the Backup is complete.

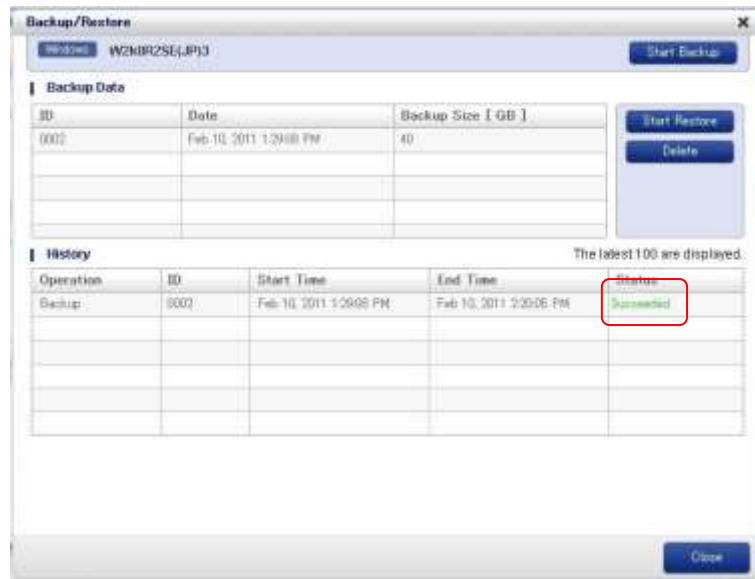


Figure 7 Managing Disks

Users can also check a Backup’s progress from the status column of the “Backup / Restore” screen.

Note: When the Backup is complete, Users can boot the VMs.

How to Backup Additional Disks

Select the “System Manager” from the Startup menu and choose the required Virtual System.

1. Click the “Details” button

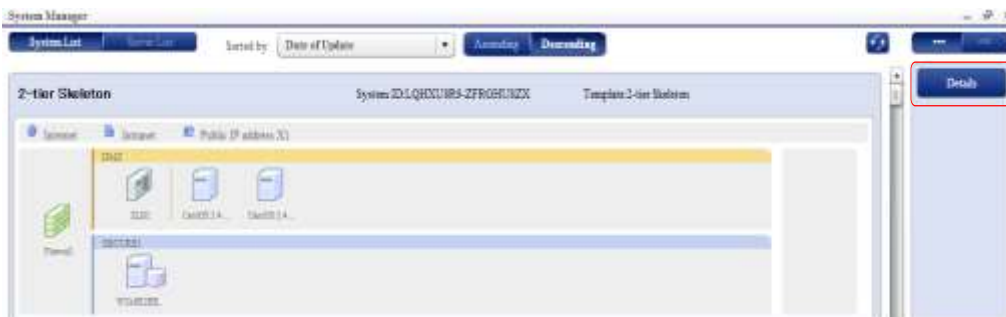


Figure 8 Managing Disks

Select the correct VM and from the drop-down menu choose the Additional Disk to be backed up.

2. Click the "Backup Restore" button.

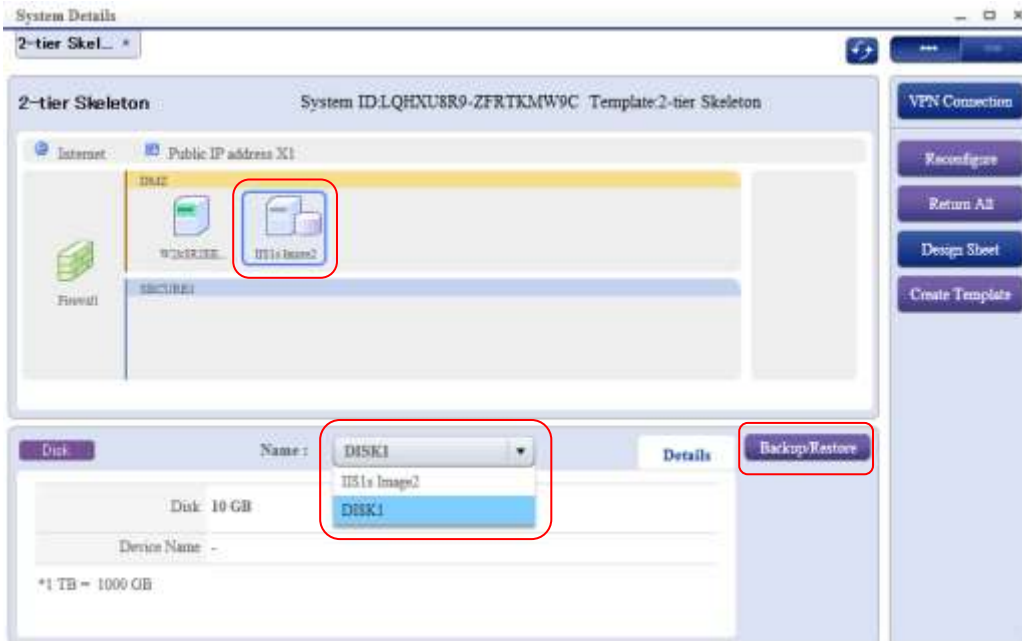


Figure 9 Managing Disks

Note: The VM must be 'stopped' before a backup of any disk can take place.
Supplementary Note: Skip this step if the Additional Disk does not attach to a VM.

3. Click the "Start Backup" button.

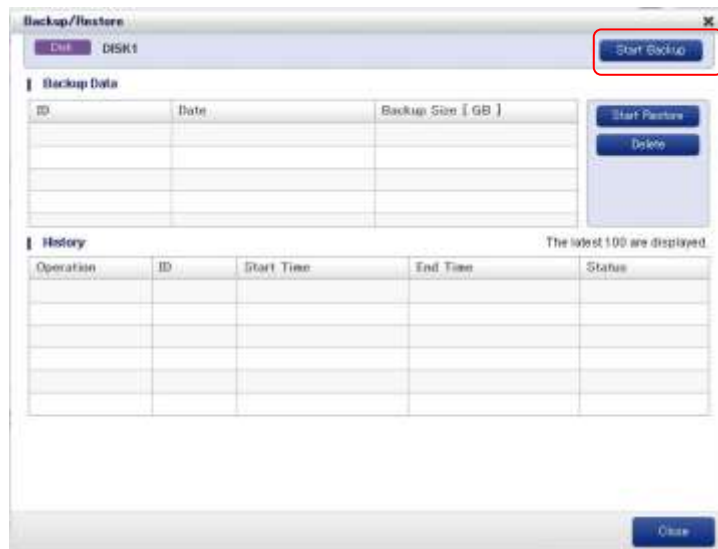


Figure 10 Managing Disks

- Confirm the Billing Approval and click the "Yes" button.

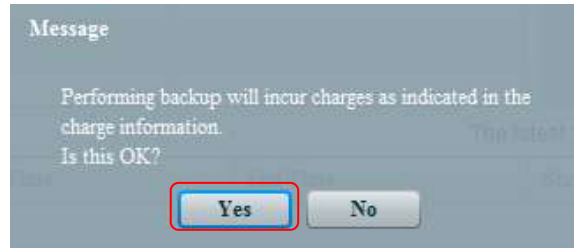


Figure 11 Managing Disks

- A notice that the Backup has started is displayed, so click the "OK" button.

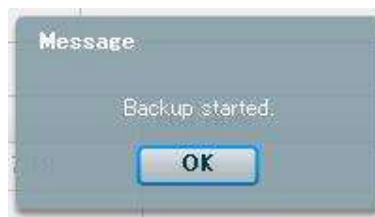


Figure 12 Managing Disks

Completion of the Backup is confirmed on the "System Details" screen.

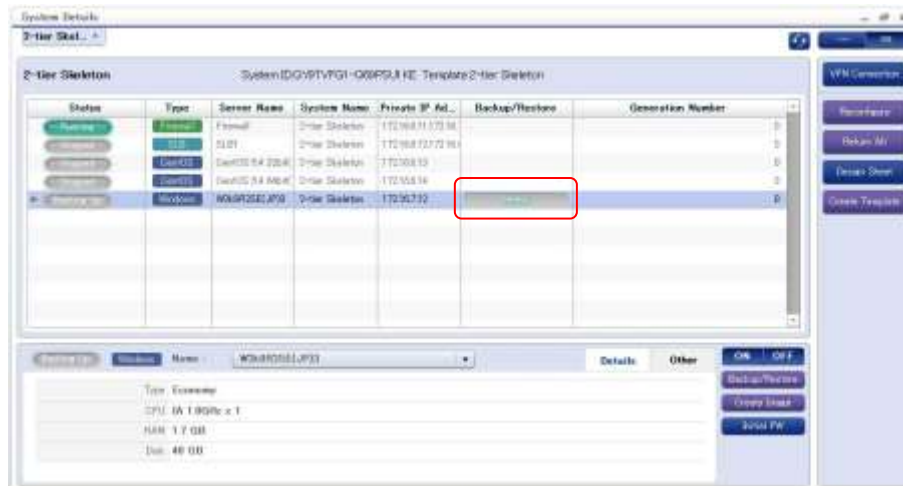


Figure 13 Managing Disks

Users can confirm the Backup status by switching from to “List Display” of the “System Details” window. When the gauge is full, the Backup is complete.

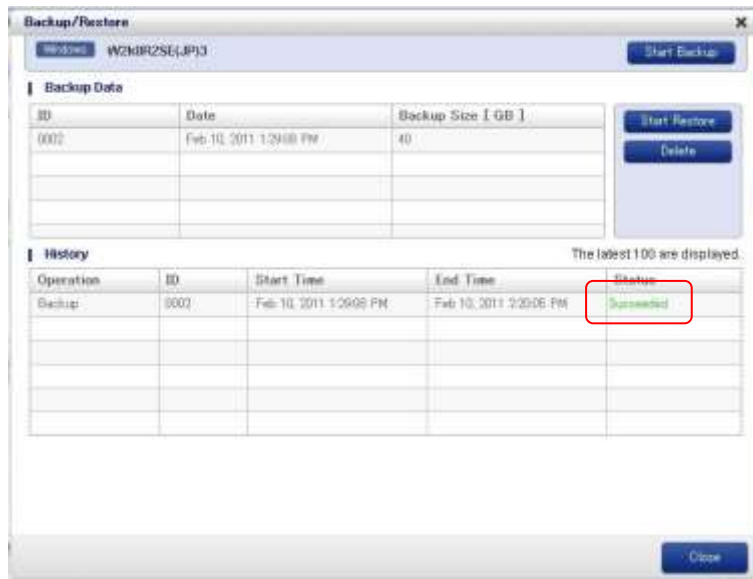


Figure 14 Managing Disks

Users can also check a Backup’s progress from the status column of the “Backup / Restore” screen.

Note: When the Backup is complete, Users can boot the VMs.

How to Restore System Disks

Select the “System Manager” from the Startup menu and choose the required Virtual System.

1. Click the “Details” button

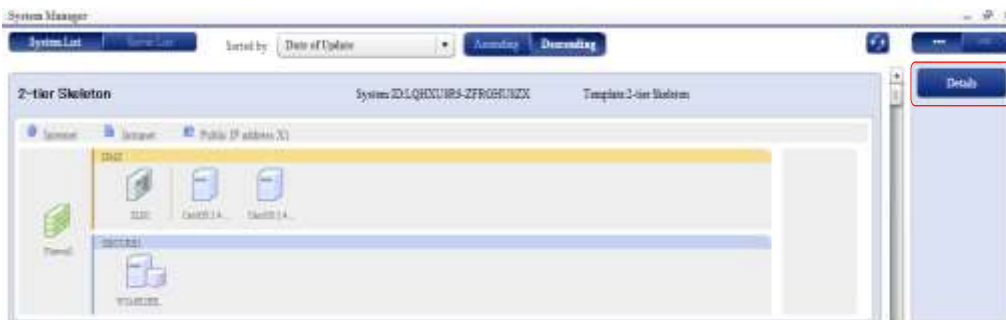


Figure 15 Managing Disks

2. Select the correct VM and click the “Backup Restore” button.

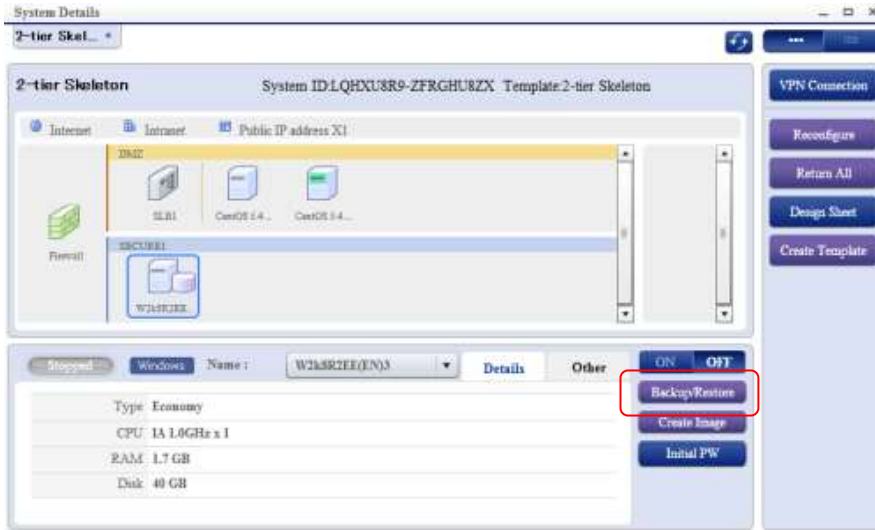


Figure 16 Managing Disks

3. Select the Backup Data that is to be restored.

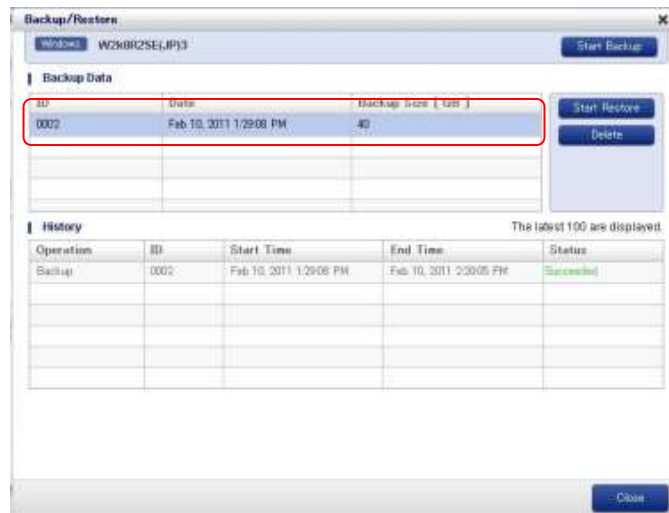


Figure 17 Managing Disks

4. Click the “Start Restore” button.

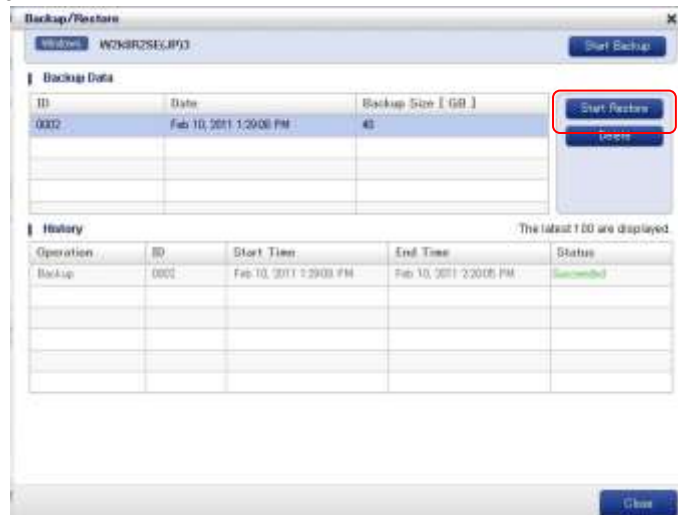


Figure 18 Managing Disks

- Confirm to start the Restore by clicking the "Yes" button.

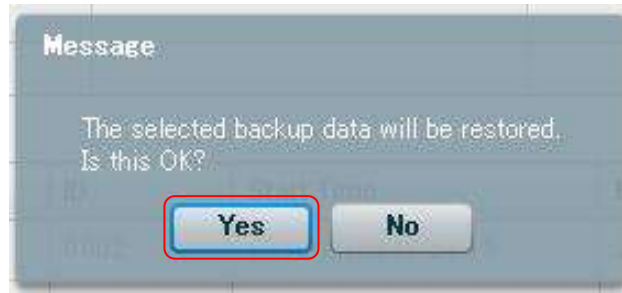


Figure 18 Managing Disks

Note: Restoration will overwrite any existing data so care must be taken before confirming a Restore.

- The notice about starting a Restoration is displayed, so click the "OK" button.

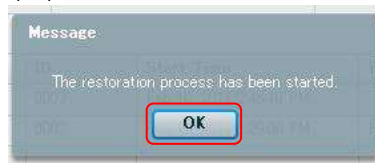
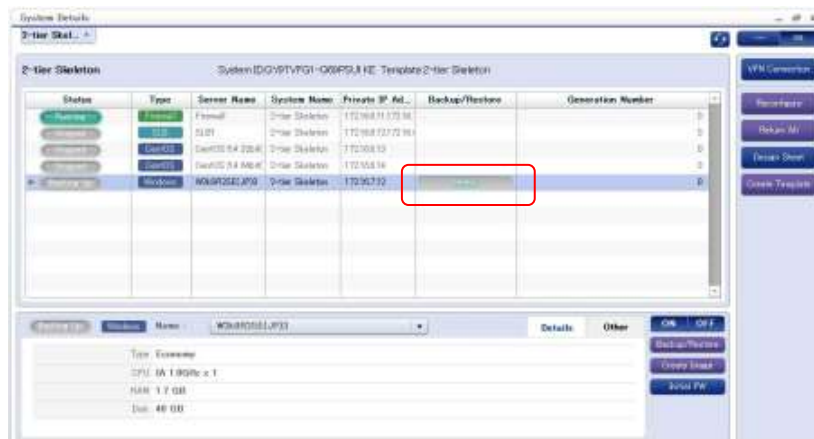


Figure 19 Managing Disks

Completion of the Restoration is confirmed on the "System Details" screen.



Users can also check a Restoration's progress from the status column of the "Backup / Restore" screen.

Note: When the Restoration is complete, Users can boot the VMs.

How to Restore Additional Disks

Select the "System Manager" from the Startup menu and choose the required Virtual System.

1. Click the "Details" button

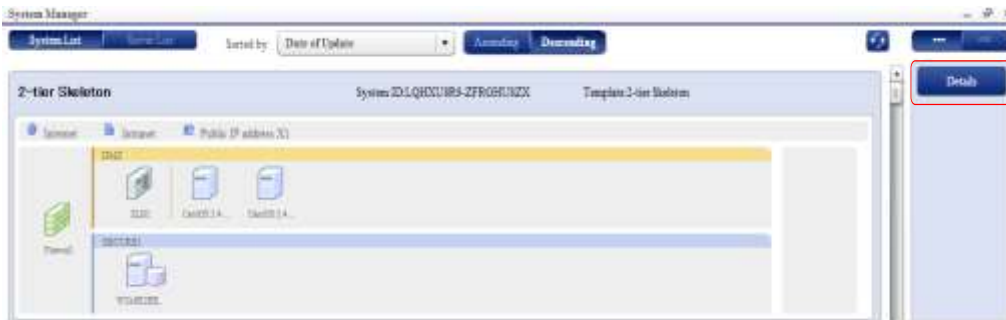


Figure 22 Managing Disks

Select the correct VM and from the drop-down menu choose the Additional Disk to be backed up.

2. Click the "Backup Restore" button.

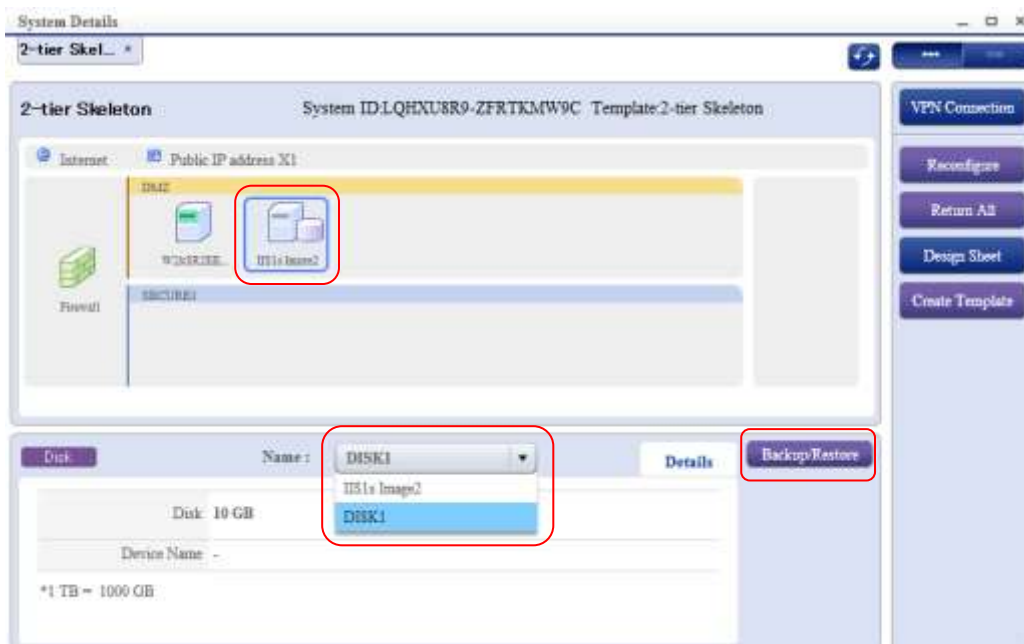


Figure 23 Managing Disks

Note: The VM must be 'stopped' before a backup of any disk can take place.

3. Select the Backup Data that is to be restored.

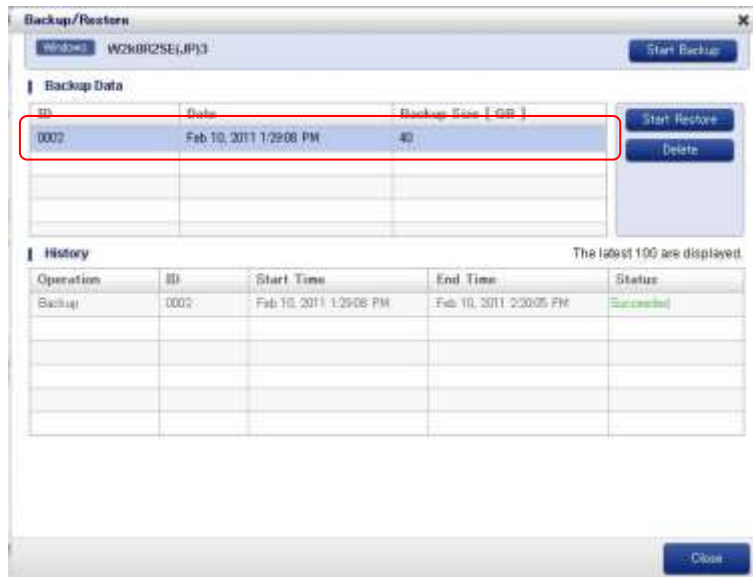


Figure 24 Managing Disks

4. Click the "Start Restore" button.

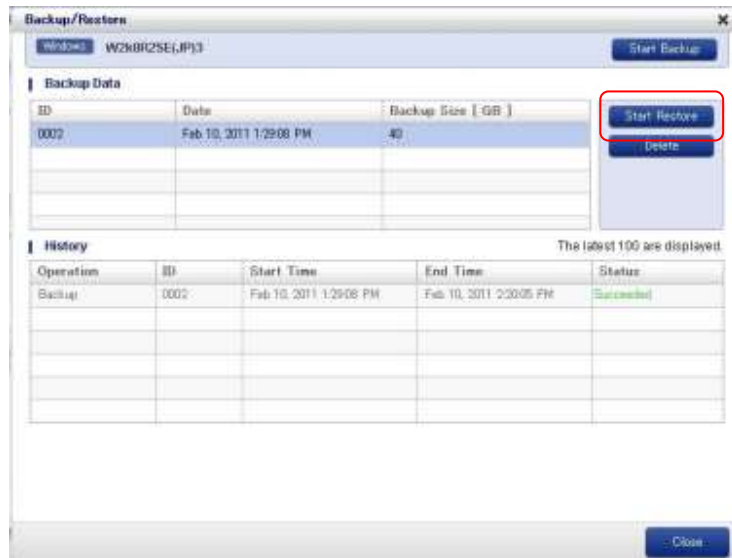


Figure 25 Managing Disks

5. Confirm to start the Restore by clicking the "Yes" button.

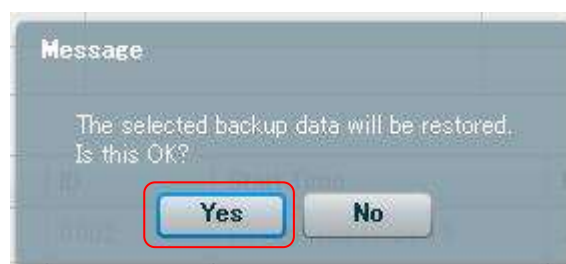


Figure 26 Managing Disks

Note: Restoration will overwrite any existing data so care must be taken before confirming a Restore.

- The notice about starting a Restoration is displayed, so click the "OK" button.

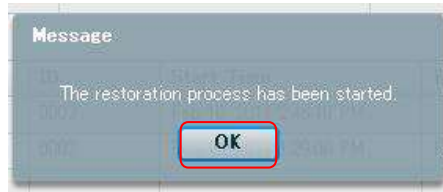


Figure 27 Managing Disks

Completion of the Restoration is confirmed on the "System Details" screen.

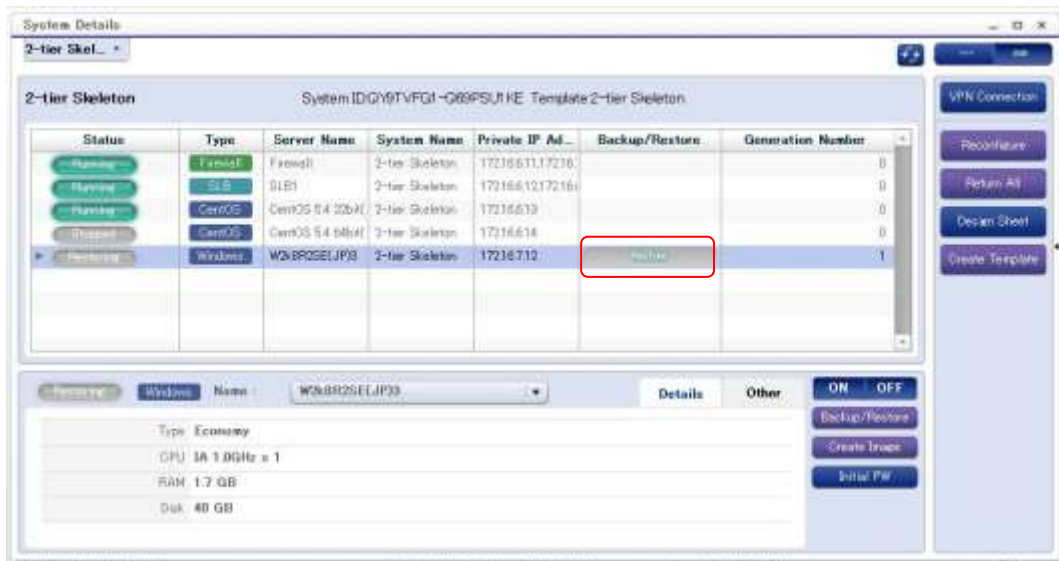


Figure 28 Managing Disks

Users can confirm the Restoration status by switching from to "List Display" of the "System Details" window. When the gauge is full, the Restoration is complete.

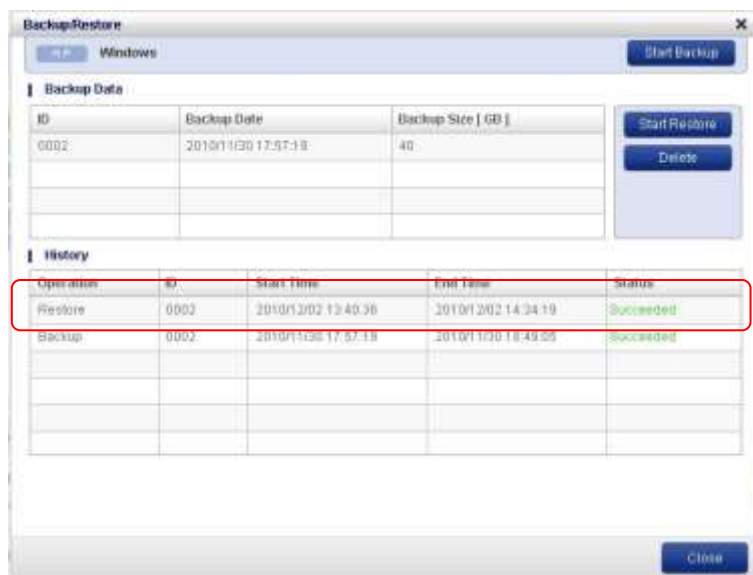


Figure 29 Restore Virtual Disks

Users can also check a Restoration's progress from the status column of the "Backup / Restore" screen.

Note: When the Restoration is complete, Users can boot the VMs.

How to Delete Backup Data

Select the "System Manager" from the Startup menu and choose the required Virtual System.

1. Click the "Details" button

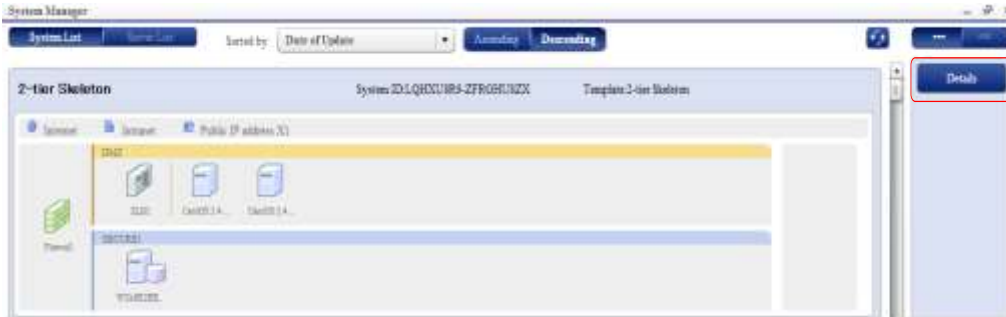


Figure 30 Managing Disks

2. Select the correct VM and click the "Backup Restore" button.

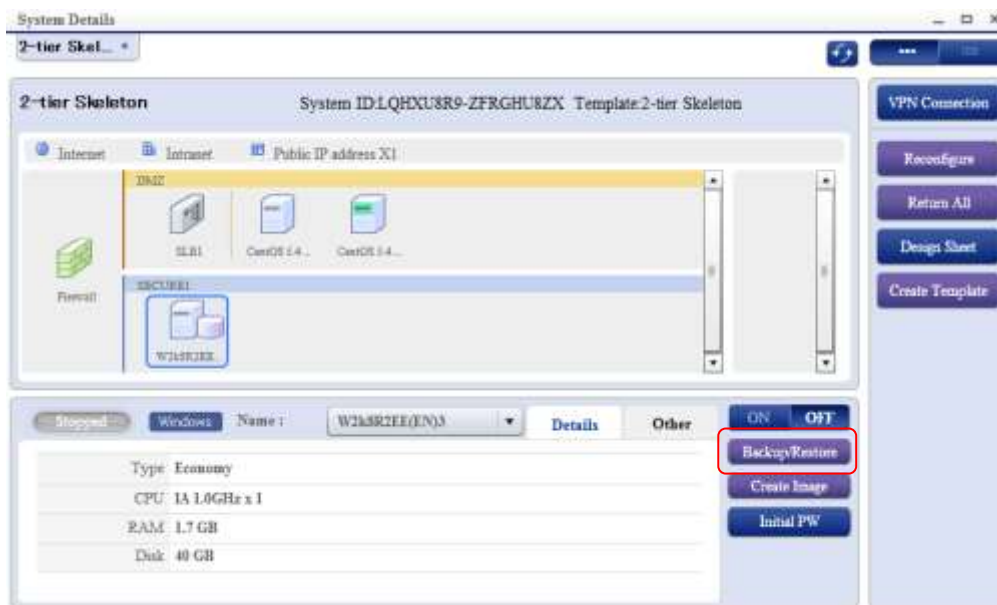


Figure 31 Managing Disks

Note: The VM must be 'stopped' before a backup of any disk can take place.

3. Select the Backup Data that is to be Deleted.

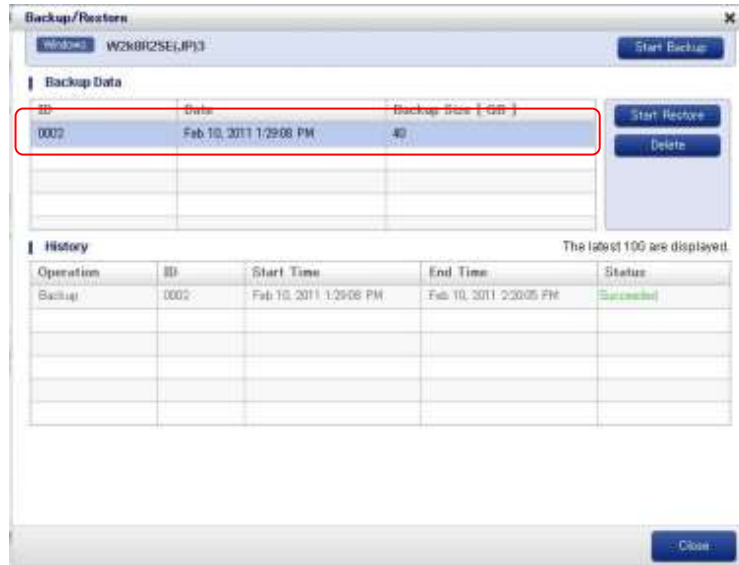


Figure 32 Managing Disks

4. Click the "Delete" button.

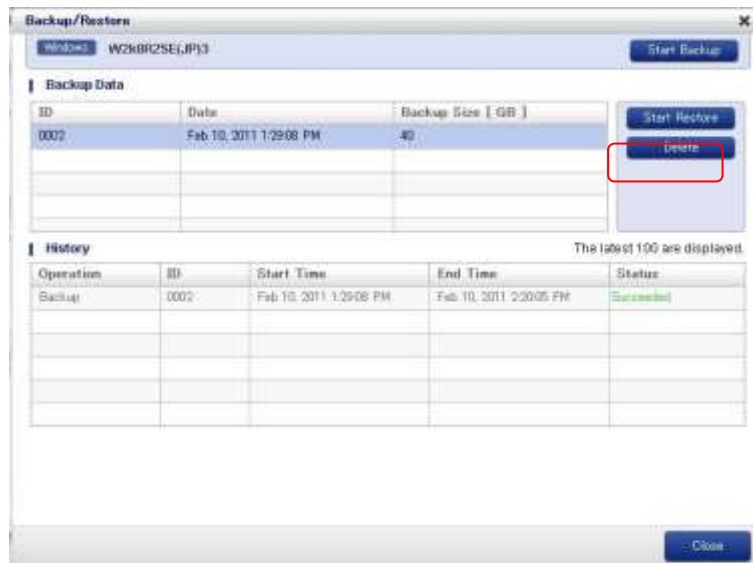


Figure 33 Managing Disks

5. Confirm to start the Deletion.

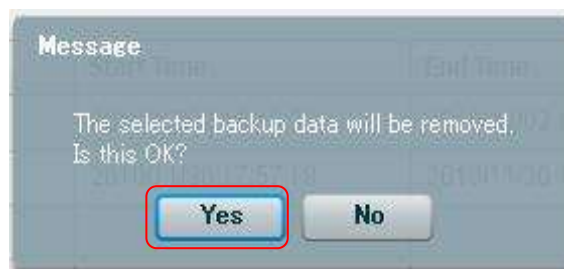


Figure 34 Managing Disks

6. The notice about starting a Deletion is displayed, so click the “OK” button.



Figure 35 Managing Disks

Completion of the Deletion is confirmed on the “System Details” screen.

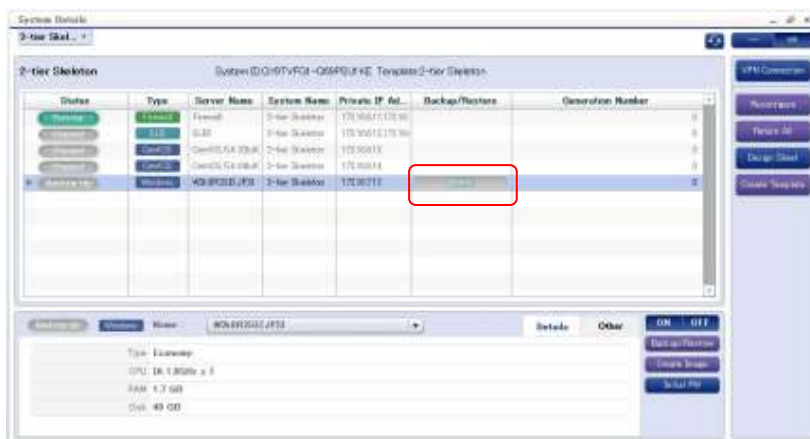


Figure 36 Managing Disks

Users can confirm the Deletion status by switching from to “List Display” of the “System Details” window. When the gauge is full, the Backup is complete.

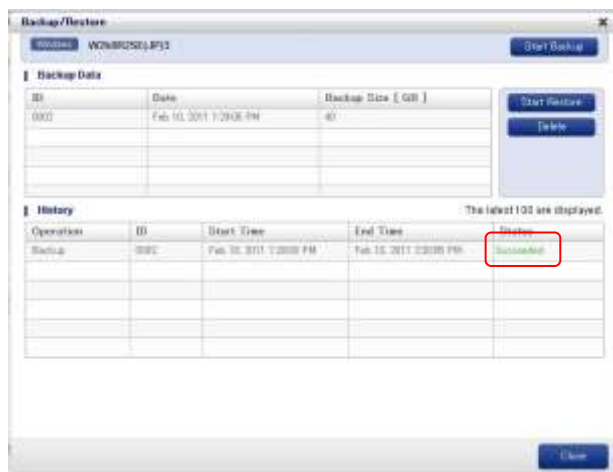


Figure 37 Managing Disks

Users can also check a Deletion’s progress from the status column of the “Backup / Restore” screen.

Note: When the Backup is complete, Users can boot the VMs.