

FUJITSU Cloud Service S5 Templates and Images

This guide describes the process for creating and using Templates and Images in the FUJITSU Cloud Service S5

How to Create Templates

Users can extract deployed Virtual Systems as a Template and use those created Templates for creating new Virtual Systems. The following procedure explains how to create a Template.

Select the "System Manager" from the Startup menu and choose the required Virtual System.

1. Click the "Details" button

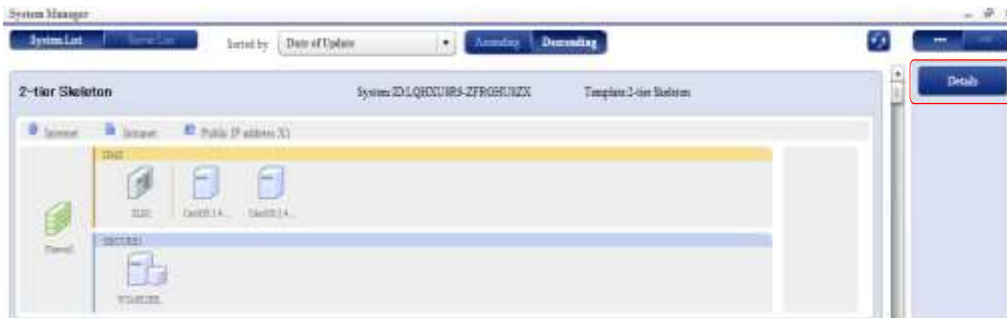


Figure 1 Templates and Images

2. When the System Details screen appears, click the "Create Template" button

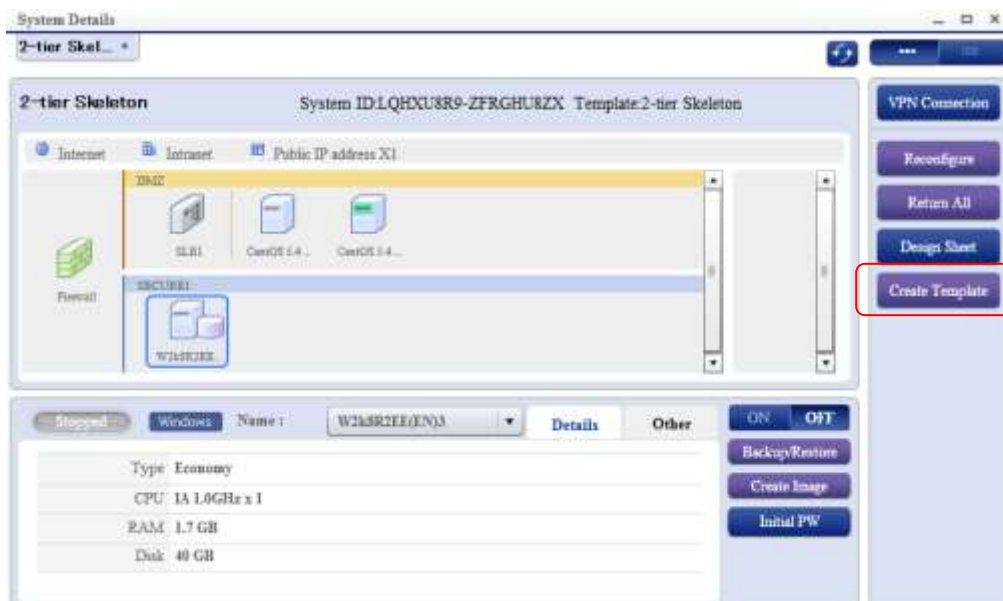


Figure 2 Templates and Images

3. Give the new Template a unique name.

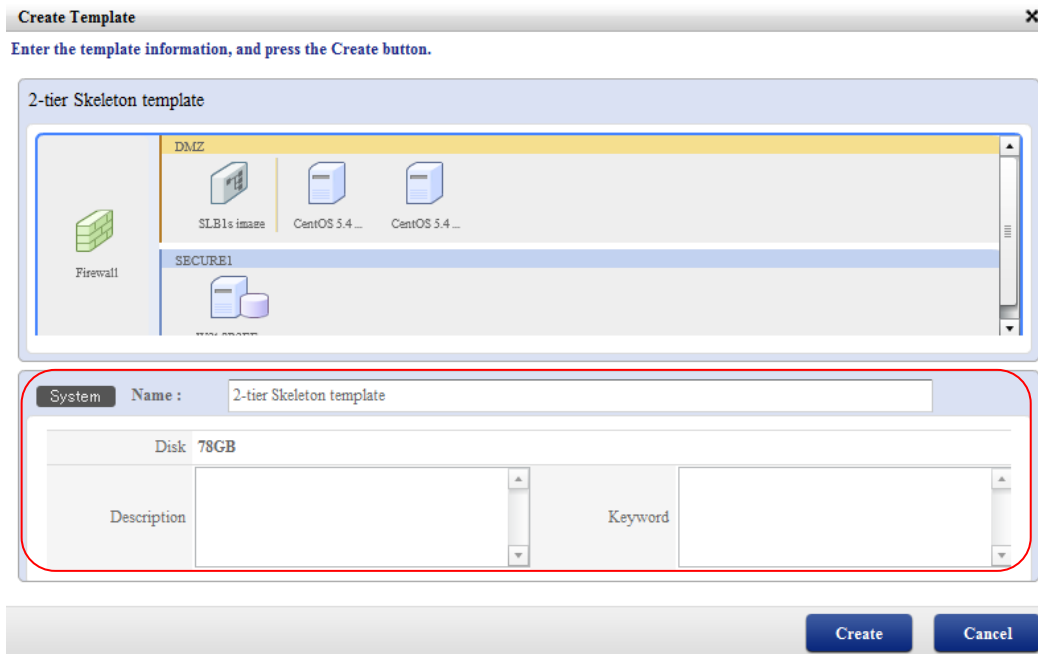


Figure 3 Templates and Images

To manage a Template, Users need to provide a "System Name", a "Description" and a "Keyword". The "Keyword" can be one or more terms used to search for the Template.

Note: Insert a one character space between each keyword.

Select all System Resources (VMs, SLBs, Additional Disks) in the Virtual System and provide a "Name" and "Description" for each.

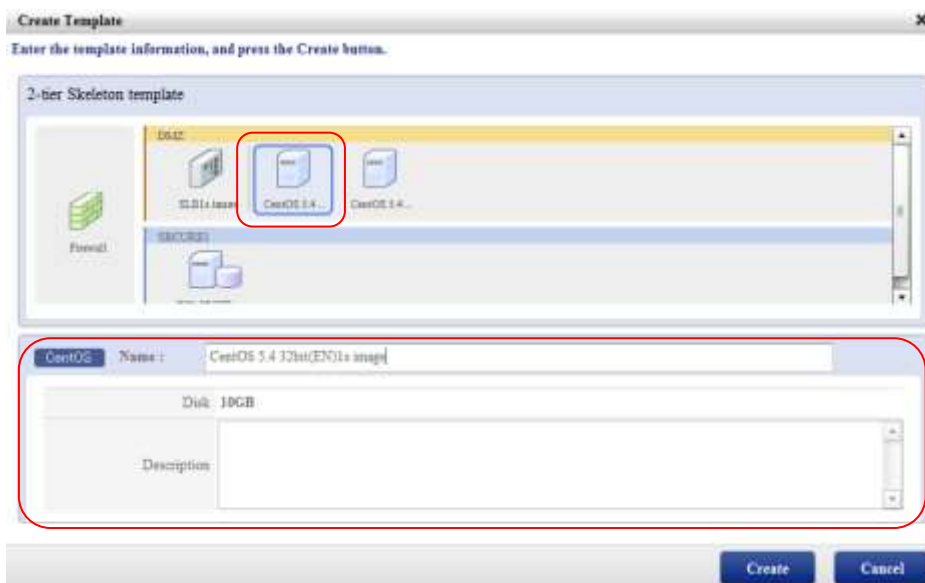


Figure 4 Templates and Images

- 4. When all information is entered, click the "Create" button.

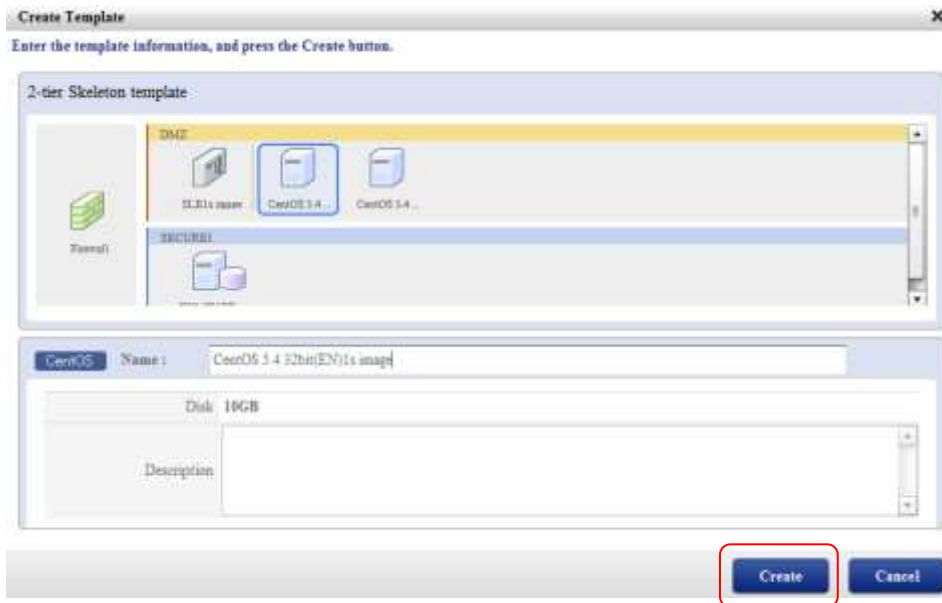


Figure 5 Templates and Images

- 5. Confirm the message and click the "Yes" button



Figure 6 Templates and Images

Start the Template creation

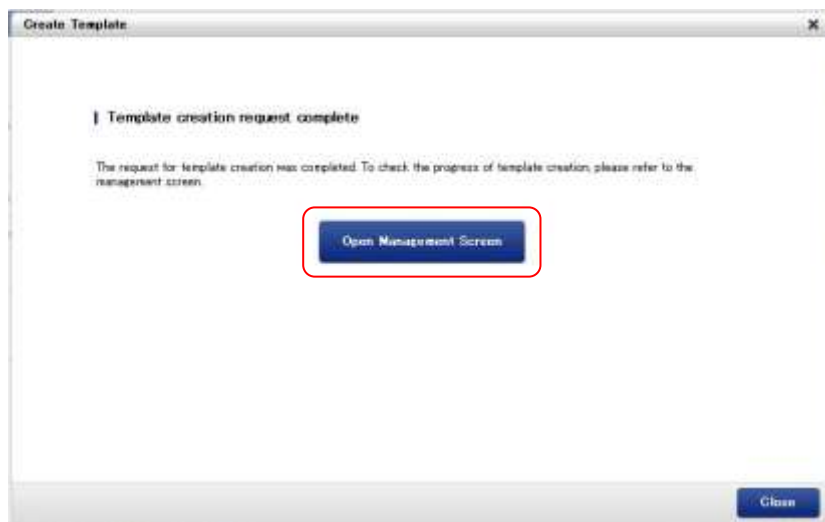


Figure 7 Templates and Images

By clicking the "Open Management Screen" button, the "Template Manager" screen is opened. From here, Users can check the progress of the Template creation.

How to Use Templates

By clicking the “User Template” tab on the 1st step in Design Studio, Users can access their previously created Templates.

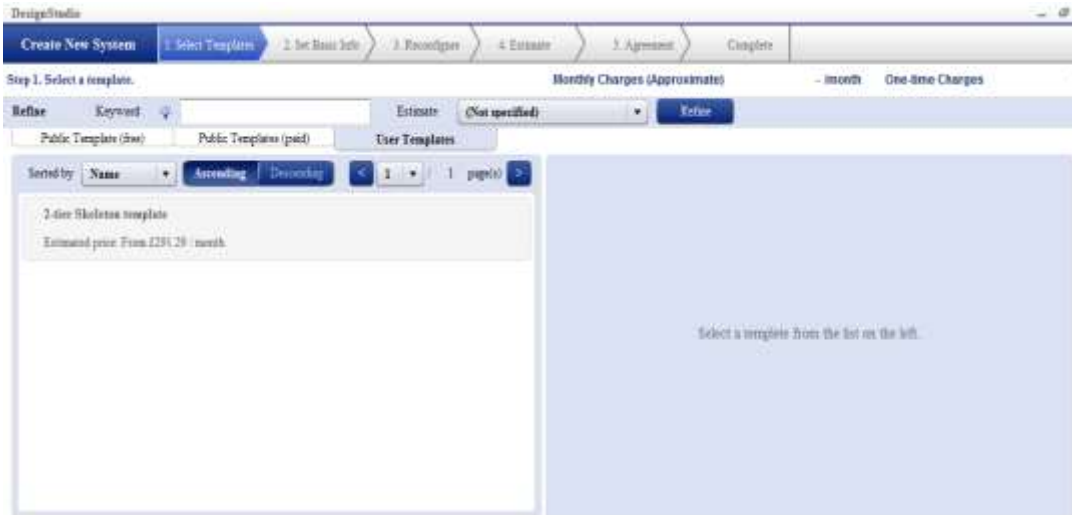


Figure 8 Templates and Images

How to Create Images

Users can extract deployed VMs as an Image and use those created Images for cloning VMs. The following procedure explains how to create an Image.

Select the “System Manager” from the Startup menu and choose the required Virtual System.

1. Click the “Details” button

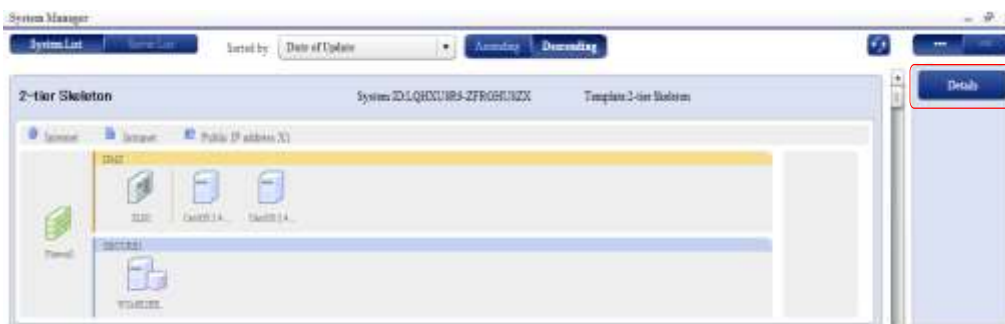


Figure 8 Templates and Images

- When the System Details screen appears, select the correct VM and click the "Create Image" button

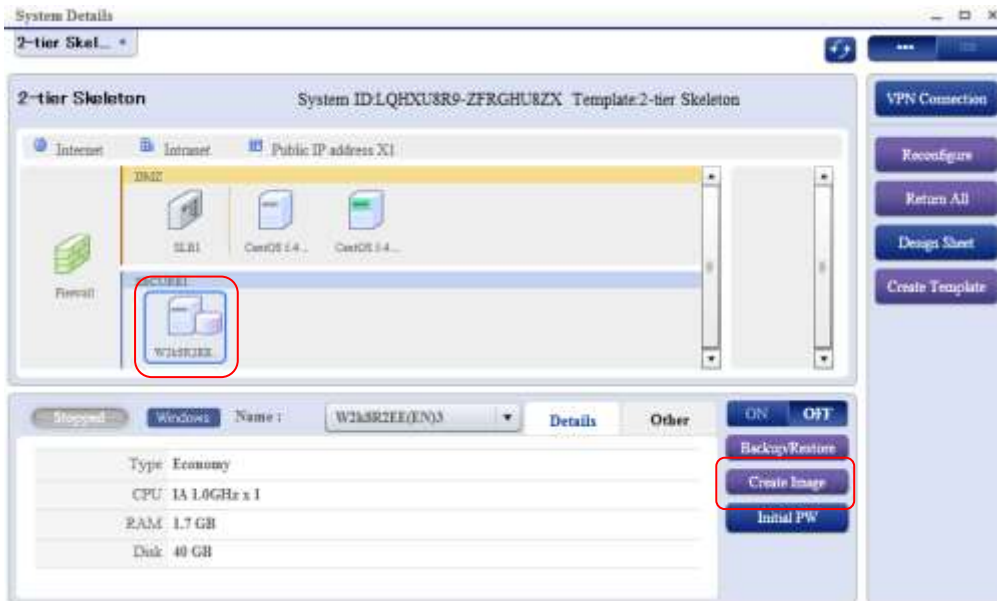


Figure 9 Templates and Images

- Give the new Image a unique name

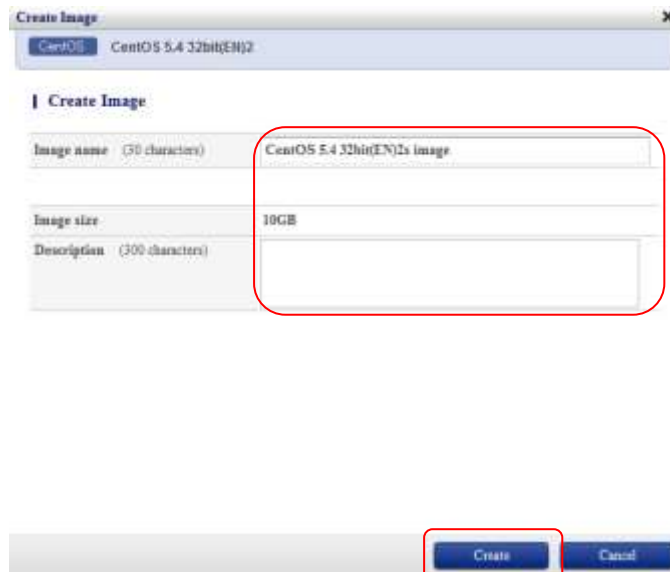


Figure 10 Templates and Images

To manage an Image, Users need to provide an "Image Name" and a "Description".

- When all information is entered, click the "Create" button.
- Confirm the message and click the "Yes" button

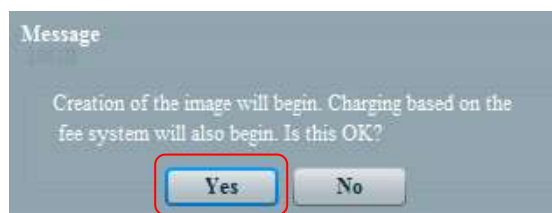


Figure 11 Templates and Images

Start the Image creation



Figure 12 Templates and Images

By clicking the “Open Management Screen” button, the “Image Manager” screen is opened. From here, Users can check the progress of the Image creation.

How to Use Images

By selecting “User” from the “Usage” pull-down menu (User is the third step on the menu). Users can access their previously created Images.

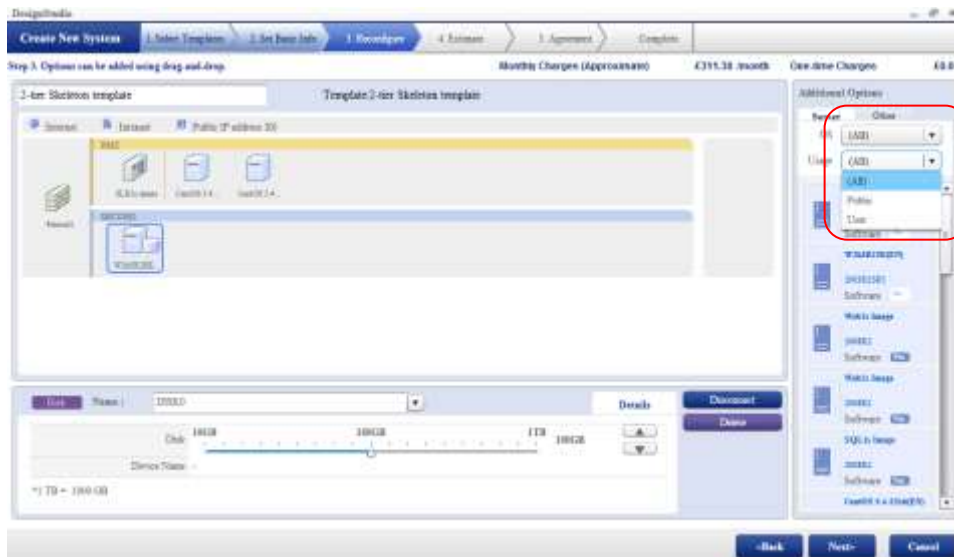


Figure 13 Templates and Images

Contact **FUJITSU Cloud Service S5 Team**
 FUJITSU
 E-mail: GlobalCloud@us.fujitsu.com
 Website: us.fujitsu.com

All rights reserved, including intellectual property rights. Technical data subject to modifications and delivery subject to availability. Any liability that the data and illustrations are complete, actual or correct is excluded. Designations may be trademarks and/ or copyrights of the respective manufacturer, the use of which by third parties for their own purposes may infringe the rights of such owner.

© Copyright Fujitsu Limited 2011